



## VTC-C2BAZE 2.1MP HD-SDI / EX-SDI Auto-Focus-Zoom Camera



### FEATURES

- 1/3" 2.1 MegaPixel Progressive Scan CMOS
- 2.1 MegaPixel With full 1080p/720p Output
- Up to 30fps live view @ 1920x1080 (1080p)
- MegaPixel IR Corrected 3-9mm (VTC-C2BAZE39) / 9-22mm (VTC-C2BAZE922) Motorized Auto Focus and Zoom
- Extended long reach HD Solution
- Mechanical IR Cut Filter (True Day/Night)
- 16:9 Video format
- On-board Intelligence (OBI Technology) delivers Auto-Focus-Zoom by tracking motion, then optically zooming in to that area of the frame
- Fully programmable advanced WDR
- Advanced OSD Functions: Motion Activated Pointing Zoom, Defog, Smart Dynamic IR, BLC/HLC, Motion Deblur, Pixel Defect Compensation, Title Set, Mirror, Flip, Lens Refresh, Lens Initialize, Home Position, DSS
- Up to 1000' HD Transmission Range (Depending on cable characteristics and integrity)
- 12VDC / 24VAC Dual Voltage Operation

# VITEK



# Safety Precaution

- To prevent electrical shock and risk of fire hazards, do not expose this unit to rain or moisture and only use specified power source..



The symbol is intended to alert the user to the presence of uninsulated "dangerous voltage" within the product's enclosure that may be of sufficient magnitude to constitute a risk of electrical shock.



The symbol is intended to alert the user to the presence of important operating and maintenance (servicing) instructions in the literature accompanying the unit.

- **Warning :**

This equipment has been tested and found to comply with the limits for a Class A digital device, pursuant to part 15 of the FCC Rules. These limits are designed to provide reasonable protection against harmful interference when the equipment is operated in a commercial environment. This equipment generates, uses, and can radiate radio frequency energy and, if not installed and used in accordance with the instruction manual, may cause harmful interference to radio communications. Operation of this equipment in a residential area is likely to cause harmful interference in which case the user will be required to correct the interference at their own expense.

- **Caution :**

Any changes or modifications in construction of this device which are not expressly approved by the party responsible for compliance could void the user's authority to operate the equipment. Main power quality should be that of a typical commercial environment. If the user of the model requires continued operation during power interruptions, it is recommended that the device be powered from an uninterruptible power supply (UPS).

# Safety Precaution

## **NOTICE**

- The image used in this instruction manual are processed to help comprehension and may differ from actual video of the camera.
- Avoid installing in areas where shock or vibration may occur.
- Pay attention to safety when running the connection cables and make sure that the cables are not subject to heavy loads, kinks, moisture or damage.
- Never open the device (no user serviceable parts inside). The warranty becomes void if repairs are undertaken by unauthorized persons.
- Maintenance and repair have to be carried out only by authorized service centers.
- Use only a mild detergent to clean the housing.
- The camera should never be operated beyond the technical specifications. This can lead to damaging the device and void the warranty.
- The camera should never be operated in water.

# Contents

- p.02~03
  - Safety Precaution
- p.04
  - Contents
- p.05~06
  - Features
  - Package Includes
- p.07
  - Dimensions
- p.08
  - Part Names
- p.09
  - Installation Instructions
- p.10~26
  - Operating Instructions
- p.27
  - Specifications
- p.28
  - OnCue VT-HDOCE Series
- p.29
  - Limited Product Warranty

# Features

## Key Features

- Full HD, 2Mega Pixel, EX-SDI CAMERA, 1920x1080(30p/25p)
- Extended long reach HD Solution
- Real time True WDR (Wide Dynamic Range) / 30fps
- Improved noise reduction with the enhanced 3DNR
- VTC-C2BAZE39: f=3~9mm, F1.2~F2.1 Day & Night Motorized Auto Focus and Zoom lens (Optical 3x / Digital 32x)
- VTC-C2BAZE922: f=9~22mm, F1.6~F2.3 Day & Night Motorized Auto Focus and Zoom lens (Optical 2.4x / Digital 32x)
- Dual ICR Switch
- Focusing Status Indicator on Screen
  - ★(Blue) Focusing in process
  - ☆(White) Focusing Completed
- Various Zooming Technologies
  - Smart Motion Zoom (Automatic zoom in/out when motion is detected)
  - Pointing Zoom which enables the zooming of any area within the FOV
  - Preset Zoom up to 4 presets
- Home Position setting
- Motion Detection, Privacy Mask, Defog, Sens-up(x32), BLC/HLC, D-Zoom, H/V/HV Flip, Motion Deblur, Pixel Defect Compensation, Lens Refresh, Lens Initialize
- ID / TITLE / ZOOM RATIO DISPLAY
- Enhanced Sensitivity by DSS technology
- EX-SDI or HD-SDI switchable
- Top performance at low light sensitivity (Sens-up On)
- OSD menu & Video sub-out for easy installation & maintenance
- Circuit protection against faulty connection in power polarity
- Isolated power supply against ground loop problem
- Remote control via RS-485 (Pelco-D/P)
- Firmware update via RS-485
- Anti-Scratch hard coated Window

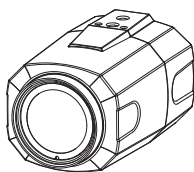
# Features

## General Description

This camera realizes the natural and crisp image as you see the scene in front of you by adopting Auto Focus Full HD(1920x1080p) camera module.

- With ICR mechanism,
  - Enhances its sensitivity about 10x at night time
  - Can accept infrared light
- With 24VAC/12VDC dual power design,
  - Offers the flexibility of installation
  - Ensures the reliability

## Package Includes



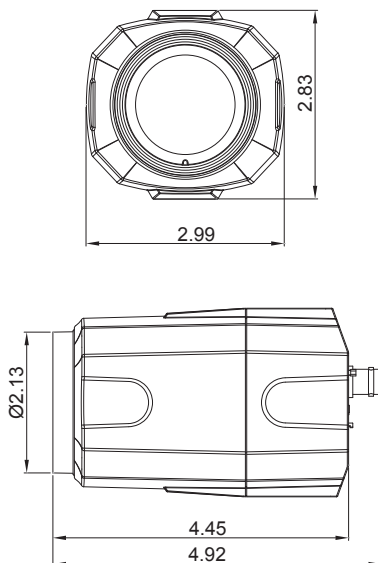
Zoom Box Camera



Operating Instruction

# Dimensions

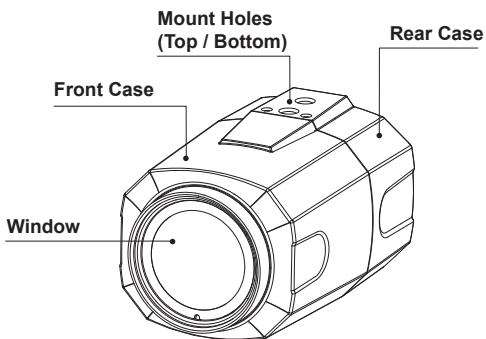
(unit : mm)



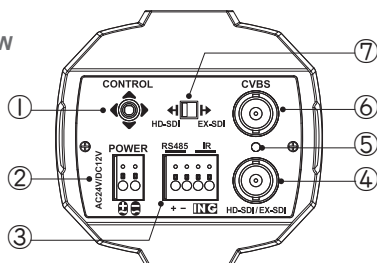
## CAUTION

- Extreme care should be taken NOT to scratch the window on front of lens.
- Care should be taken that the cable is NOT damaged, kinked or exposed in a hazardous area.
- Do not point the camera lens directly at the sun or a spot light.

# Part Names



## REAR VIEW



- |   |                                  |
|---|----------------------------------|
| ① OSD Control Joy stick                 | ④ HD-SDI/EX-SDI output connector |
| ② Power input terminal<br>(24VAC/12VDC) | ⑤ Power LED                      |
| ③ RS-485 / IR connector                 | ⑥ CVBS output connector          |
|   | ⑦ Video format Switch            |



# Installation Instructions

## Installation and commissioning Instructions

- Make sure the power is removed before installation.
- After all connections are properly finished, follow this order for applying power. first connect the low voltage wires to the camera, then plug the AC/DC adapter to AC outlet to avoid damage..
- The camera has a 1/4" thread insert on top and bottom for mounting the camera to a wall or ceiling with a corresponding mount.

## Power Supply Connection

Camera can work with either 24VAC or 12VDC, dual voltage power. Primary and secondary grounds are completely isolated to avoid possible ground-loop problems.

# Operating Instructions

## Using OSD Controller

Setup menu can be accessed and controlled by OSD control joy stick on the rear of the camera unit.

Five commands are available with the joy stick.

The design of OSD could be different according to the Model.



### Description of the joystick operation

- 1) SET Key (●) : Access to the menu or enter the setting.  
To enter the main menu, press the Set Key down for about 1.5 seconds.
- 2) UP/DOWN Key (▲/▼) : Choose the desired sub-menu and to move the cursor up or down.
- 3) LEFT/RIGHT Key (◀/▶) : Set up the value of the selected menu.  
Used to adjust the desired menu selection and to move the cursor left or right.
- 4) '⏏' denotes a long press down for about 2 seconds



### Description of the ZOOM & FOCUS\* adjustment

(\*) Works only when OSD Menu is inactive.

- |                 |                   |
|-----------------|-------------------|
| 1) ▲ : Zoom In  | 3) ◀ : Focus Near |
| 2) ▼ : Zoom Out | 4) ▶ : Focus Far  |

# Operating Instructions

## OSD menu Startup

- Press '●' (OSD menu Joy stick key) down for about 2 seconds to access the setup menu mode.
- Lens Initializing is strongly recommended at the first stage of the setup menu control.  
ZOOM/FOCUS > LENS INIT > Press the joystick '⬇' straight down for about 2 seconds.

MENU V5.xx	
▷ 1. ZOOM/FOCUS	⬇
2. EXPOSURE	⬇
3. SCENE ENHANCE	NORMAL
4. 3D-NR	MID
5. DAY/NIGHT	EXT
6. PICT ADJUST	⬇
7. SPECIAL	⬇
8. SYSTEM	⬇
9. EXIT	SAVE&EXIT⬇

## Direct Control menu



MAIN	DEFAULT	DESCRIPTION
ZOOM/FOCUS	-	Sets FOCUS and ZOOM relative fuctions.
EXPOSURE	-	Sets EXPOSURE MODE, BRIGHTNESS, SENS-UP, AGC and MOTION DEBLUR.
SCENE ENHANCE	NORMAL	SCENE ENHANCE provides several ways to enhance the video in various environments with settings of NORMAL, WDR, D-WDR, BLC and HLC.
3D-NR	MID	Sets 3DNR level. LOW, MID, HIGH
DAY/NIGHT	EXT or AUTO	Sets DAY / NIGHT to EXT, AUTO, COLOR, B/W and COLOR D/N. Set to EXT mode for cameras with IR-LED's and set to AUTO mode for non IR-LED camera types.
PICT ADJUST		Sets WHITE BAL, SHARPNESS, COLOR GAIN, GAMMA
SPECIAL		Sets MIRROR/FLIP, PRIVACY, MOTION, PIXEL DEFECT, TITLE SET, DISPLAY, DEFOG, POINTING ZOOM
SYSTEM		Sets TV SYSTEM, RESOLUTION, COMM.SETUP, LANGUAGE and FACTORY DEFAULT

# Operating Instructions

EXIT

SAVE & EXIT – Exits the menu after saving the parameters.

## 1. ZOOM/FOCUS

ZOOM / FOCUS	
▷ FOCUS MODE	ZOOM PUSH
D-ZOOM	OFF
HOME POSITION	OFF
LENS REFRESH	OFF
LENS INIT.	ON 
RETURN	RET 

### 1-1. FOCUS MODE (default: ZOOM PUSH)

- : ZOOM PUSH, AUTO and MANUAL modes are available for focusing.
- ZOOM PUSH: Focusing is activated only when zoom in/out is working.
  - AUTO: Focusing is always working.
  - MANUAL: Focusing can only be adjusted by ▲, ▼ of OSD control joystick or the remote control via RS-485.

### 1-2. D-ZOOM (default: OFF)

: D-ZOOM (Digital zoom) is available up to 32x. D-ZOOM starts working when the optical zoom reaches its maximum tele-position. Zoom ratio is displayed on the bottom right corner of the monitor if SPECIAL>DISPLAY>ZOOM RATIO is set to ON.

### 1-3. HOME POSITION (default: OFF)

- : Camera can be configured to return to pre-defined Zoom position automatically after a certain period of time with no activity.  
Home Position is recovered after the camera is re-initializing or Powered ON/OFF.
- O-ZOOM RATIO: Sets the Optical ZOOM position as Home Position.  
(x1.0~x3.0 / x1.0~x2.4)
  - DURATION: When ZOOM IN/OUT control is completed, camera will return to the pre-defined Zoom position after the Duration time.  
If SMART MOTION / PRESET ZOOM are running, duration for Home position starts after finishing SMART MOTION / PRESET ZOOM.

# Operating Instructions

HOME POSITION		
▷	O-ZOOM RATIO	OZ X2.0
	DURATION	5sec
	RETURN	RET ↓

## 1-4. LENS REFRESH (default: OFF)

: LENS REFRESH can be set to 1~10days and performs a scheduled LENS Initialization automatically. Every initialization occurs when the time reaches the scheduled time after setup or power up. When LENS REFRESH initiates LENS Initialization, a notification LENS INITIALIZING appears on the top left corner on the monitor.

## 1-5. LENS INIT (default: ON 'P')

: Lens initialization is necessary during the installation or the regular operation to align the position data with the mechanical positions whose lens elements may move and deviate from its calibrated position by shock or vibration, for example, during transportation.

LENS INIT starts the lens initialization when pressing the joystick lever straight down for about 2 seconds.

LENS INIT checks the positions for zoom and focus at both end positions and saves them for reference.

Lens initialization is automatically executed upon power up.

### CAUTION

- It is necessary to execute LENS INIT in the following situations:
  - 1) At the final step of installation.
  - 2) When out of focus due to shock or vibration.

## 2. EXPOSURE

### 2-1. MODE (default: AUTO)

: Set EXPOSURE MODE to AUTO, IRIS Priority, SHUT. Priority, MANUAL and Flickerless. SHUT. Priority, MANUAL and Flickerless modes disable SENS-UP and MOTION BLUR functions.

# Operating Instructions

EXPOSURE	
▷ MODE	AUTO
BRIGHTNESS DAY	: : : : : :  10
BRIGHTNESS NIGHT	: : : : : :  8
SENS-UP	OFF
AGC	: : : : : :  10
MOTION DEBLUR	ON ↓
RETURN	RET

- **AUTO:** Optimizes the video level by controlling the iris and the shutter speed automatically.
- **IRIS Priority:** Select to fix IRIS at a certain aperture and the video level is controlled by an automatic shutter control. Lower IRIS LEVEL will close the iris more and increase the field of depth in the daytime but significantly decrease the low light performance. Too low of IRIS LEVEL will result in foggy video by diffusion from the lens iris.
- **SHUT. Priority:** Select to fix SHUTTER speed at a certain speed and the video level is controlled by an automatic iris control.  
This mode is useful when color rolling occurs under fluorescent lighting.  
This mode is not recommended for outdoor or daytime.
- **MANUAL:** Iris and Shutter can be set to fixed.
- **Flickerless :** Reduces flicker in video when US(60Hz)/EU(50Hz) mode is used in 50Hz/60Hz fluorescent lighting respectively.

**2-2. BRIGHTNESS DAY**(default:10): Adjusts the brightness of day time video (0~20).

**2-3. BRIGHTNESS NIGHT**(default:10): Adjusts the brightness of night time video (0~20).

**2-4. SENS-UP** (default: OFF)

- : A brighter video can be obtained by increasing the exposure time at night with SENS-UP. SENS-UP is the maximum integration of frames by DSS (Digital Slow Shutter) in low light.
- **AUTO:** SENS-UP is enabled or disabled automatically by the scene brightness. Higher SENS-UP can get brighter video but the slower frame rate will cause motion blur and more white pixels. If set to AUTO, maximum integration limit for SENS-UP can be set to x2, x4, X8, x16, X32 in SENS-UP menu.
- **OFF:** Disables SENS-UP.

**2-5. AGC** (default: 10)

- : AGC amplifies the video gain for brighter video but will cause noise and white pixel accordingly. AGC level less than 10 disables AUTO in DAY/NIGHT.

# Operating Instructions

## 2-6. MOTION DEBLUR (default: ON)

: ON enables MOTION DEBLUR to reduce motion blur in certain indoor environments. Noise or color rolling can increase.

## 3. SCENE ENHANCE

### 3-1. NORMAL (default)

: Optimized for normal indoor and outdoor in good lighting conditions.

### 3-2. WDR

: Improves the visibility for bright areas and dark areas by double capture of image with LONG and SHORT exposures. WDR level can be selected from LOW, MID and HIGH. Care should be taken to select this mode because video may lose its quality in some environments by over compensation.

※ CVBS video signal: Connecting 2nd video to CVBS port disables WDR function temporarily. It should be considered when installer adjusts the video with installation monitor via CVBS video signal.

### 3-3. D-WDR

: Improves the visibility by compensating the video gain for the dark area. Noise can increase in the dark area accordingly.

### 3-4. BLC

: Improves the visibility for dark objects caused by bright back light. Outside area of BLC window can over saturate. BLC has a target window for compensation and its size and position can be set by H-POS, V-POS, H-SIZE and V-SIZE.

### 3-5. HLC

: Cuts out the bright area with a black mask and excludes it from compensation. Lower HLC LEVEL cuts out video from lower light levels (more sensitive).

## 4. 3D-NR

3D-NR is a very sophisticated and powerful time-based noise reduction technology by monitoring the noise for several video frames and defining and eliminating them consecutively at low light. Higher setting reduces more noise but results in losing the sharpness and tail effects or motion blur may occur.

# Operating Instructions

## 5. DAY / NIGHT

DAY/NIGHT is used to control the setting during day-time and night-time operation. Select the mode according to the lighting conditions and the camera type. SMART (DYNAMIC) IR can be set to reduce the saturation by strong IR illumination at night in any menu. Setting SMART (DYNAMIC) IR in any menu is identically applied to other menu. Zero(0) turns off SMART (DYNAMIC) IR and High setting decreases the saturation but the corners will be darker accordingly. IR LED Control (AUTO/OFF) is available with IR LED model only. If IR LED is set to OFF, IR LED will be turned OFF but DAY or NIGHT is still determined by the built-in light photo sensor.

### 5-1. EXT

: DAY or NIGHT is determined by the built-in light photo sensor.  
Camera with IR LED must be set to EXT.

### 5-2. AUTO

: Used when DAY or NIGHT is determined by light level through the lens and DAY from/to NIGHT is switched automatically by the scene brightness. D↔N THRESHOLD, D↔N DELY and SMART (DYNAMIC) IR can be set in the menu. When EXPOSURE>AGC is less than 10, DAY/NIGHT AUTO is disabled and forcibly switches to \_\_\_(DAY) to avoid malfunction. EXT, B/W (NIGHT) and COLOR (DAY) is independent on AGC level. When EXTERNAL IR LED is used with NON IR LED model, please set to IR LED MODE ON.

DAY/NIGHT AUTO	
D↔N THRESHOLD	: : : : : :  10
D↔N GAP	: : : : : :  10
D↔N DELAY	5s
SMART IR	: : : : : :  10
RETURN	RET ↵

- D↔N THRESHOLD (0~20):  
Sets the threshold level switching from/to DAY(color) or NIGHT(B/W).  
Setting at a low level makes the camera enter NIGHT at a lower light level.  
High level makes the camera exit NIGHT at a higher light level.
- D↔N GAP (0~15):  
Sets the gap level switching from/to DAY(color) or NIGHT(B/W).



# Operating Instructions

- D↔N DELAY (0~60s):  
Sets the delay time when the camera switches from/to DAY(color) or NIGHT(B/W).

## 5-3. B/W(NIGHT)

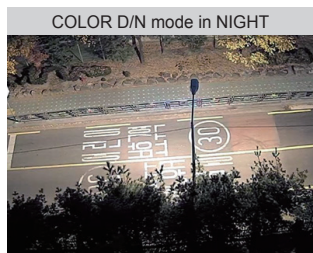
: Removes IR cut filter and switches to B/W regardless of light level.

## 5-4. COLOR(DAY)

: DAY/NIGHT is disabled and outputs color video.

## 5-5. COLOR D/N

: Color D/N mode, optimized for night conditions. It is available to recognize colors of car, people and moving objects even at night. Parameters can be controllable & programmable according to the circumstances. Application is for bright circumstances at night such as downtown, civic area, streets, mall, etc.



## 6. PICT ADJUST

PICT ADJUST	
▷ WHITE BAL	ATW
SHARPNESS	: : : : : :  10
COLOR GAIN	: : : : : :  10
GAMMA DAY	0.50
SHADING	AUTO
RETURN	RET ↓

# Operating Instructions

## 6-1. WHITE BAL (default: ATW)

: ATW, ATWext, ONE PUSH and MANUAL are available for the white balance modes.

- ATW: White balance is continuously working along with the color temperature changes in the range of 2,000K~8,500K.
- ATWext: White balance is continuously working along with the color temperature changes in the range of 1,800K~11,000K.
- ONE PUSH: White balance works only while ● is pressed.
- MANUAL: White balance is fixed to the settings by R\_GAIN and B\_GAIN. This mode can be used only when the color temperature does not vary.

**6-2. SHARPNESS** (default: 10) : Adjusts the sharpness of video.

**6-3. COLOR GAIN** (default: 10) : Adjusts the color level of video.

**6-4. GAMMA DAY** (default: 0.5) : Adjusts the gamma of day time video.

**6-5. SHADING** (default: AUTO) : Select ON/OFF or AUTO for compensation of video image.

## 7. SPECIAL

SPECIAL		
D	MIRROR/FLIP	OFF
	PRIVACY	OFF
	MOTION	OFF
	PIXEL DEFECT	OFF
	TITLE SET	↓
	DISPLAY	↓
	DEFOG	OFF
	POINTING ZOOM	OFF
	PRESET ZOOM	OFF
	RETURN	RET ↓

### 7-1. MIRROR/FLIP (default: OFF)

: Reverses the video left and right and/or up and down by MIRROR/FLIP.

- OFF : Normal display without mirroring or flipping
- Hor. : Video is reversed left and right
- Ver. : Video is reversed upside down.
- HV : Video is reversed left and right and upside down. When the video is reversed by Ver. or HV, then the joystick directions are reversed accordingly. This feature is very useful when a camera is installed upside down.

# Operating Instructions

## 7-2. PRIVACY

- : 10 Privacy zones which can be enabled individually by ZON DISP are available to mask the video.
- ZONE NUM : Set a number to select a privacy zone from 1~10.
- ZONE DISP : ON enables to display relevant privacy zone
- H-POS, V-POS, H-SIZE and V-SIZE : Adjust the size and position of zone.
- COLOR : Select the color used for masking the zone from eight colors.
- TRANSPARENCY : Defines the transparency for the mask zone.

## 7-3. MOTION (default: OFF)

- : MOTION can detect the changes in the motion window and displays the results in blocks and/or a text message.

MOTION	
D	SENSITIVITY [.....]: 10
	H-POS 10
	V-POS 5
	H-SIZE 40
	V-SIZE 25
	BLOCK DISP OFF
	MOTION OSD OFF
	SMART MOTION ZOOM OFF
	STAY ZOOMING 5sec
	RETURN RET ↵

- SENSITIVITY : Adjusts the detection sensitivity for motion. Higher value increases the sensitivity to detect small motion easier. Too low of sensitivity will cause erratic detection.
  - H-POS, V-POS, H-SIZE and V-SIZE - Adjust the size and position of the detection window.
  - BLOCK DISP : ON enables to display the blocks for the detected area.
  - MOTION OSD : ON enables to display a text message, MOVING !!!,
  - SMART MOTION ZOOM : ON enables to Automatic Zoom IN/OUT when motion is detected and also enables MOTION OSD to ON.
- Area to be zoomed in by SMART MOTION ZOOM can be set at SPECIAL> MOTION> SMART MOTION ZOOM>ZOOM TARGET. Adjusting ◀, ▶ (Joystick) for ZOOM TARGET varies the viewing angle to be zoomed when motion occurs. Set the video left and right and/or up and down by MIRROR/FLIP.

# Operating Instructions

- ※ SMART MOTION ZOOM does not work in low light conditions and BW.
- STAY ZOOMING : Sets the duration time for zooming by Motion.

## CAUTION

- Set the direction of video by MIRROR/FLIP before setting SMART MOTION ZOOM. Otherwise ZOOM TARGET could be different from your intention.

### 7-4. PIXEL DEFECT (default: OFF)

- : Detects and compensates the white pixels which become defective. Once CALIBRATE is selected, the pixel calibration is initiated with lens closed and cannot be cancelled. (See page 25 for additional details/instructions.)
- THRESHOLD : Defines the level of detection. Be sure to set the value so that the pixels are uniformly blinking over the entire screen. Too low of a value will get a bad results because too many pixels are detected as bad pixels and the maximum number of pixels for compensation will be filled by the upper area.
- EXECUTE 'P' : Long pressing will execute the pixel calibration for the detected pixels. Menu will exit automatically after compensation.

### 7-5. TITLE SET

- : Camera title (name) can be set and edited up to 15 alpha numeric and symbolic characters from ASCII codes (ENGLISH only). ▲, ▼, ◀, ▶ moves the cursor to next input. Choose a character and 'P' selects it. The selected characters are added and displayed on the top left Corner and the cursor moves right automatically for next input.
- SP - Space is inserted when pressed '●'
- BS - Cursor moves back when pressed '●'
- CLR - Clears all the characters on input line when pressed '●'.
- POS - To be able to set the title position by ▲, ▼, ◀, ▶ and ●.

### 7-6. DISPLAY

- : Enables or disables the OSD display.
- ID : ON enables camera ID display defined by SYSTEM>COMM. SETUP>CAM ID.
- TITLE : ON enables camera ID display set by SPECIAL>TITLE SET.

# Operating Instructions

- **ZOOM RATIO** : ON enables to display the zoom ratio on the bottom right corner. OZx.x appears during the optical zoom and DZx.x will display by multiplying the optical zoom ratio and the actual digital zoom ratio.
- **FOCUS INDICATE** : \* mark on the bottom right corner indicates the focusing status in blue during focusing and white after finishing.

## 7-7. DEFOG (default: OFF)

- **AUTO** : Enhance foggy video automatically according to status of scene.
- **MANUAL** : Sets to enhance foggy video manually regardless of status of scene.
- **LEVEL** : LOW, MID, HIGH  
Video quality can be less in normal environments.

## 7-8. POINTING ZOOM

ON enables to set off-centered location to be the center of zoom H-POINTER, V-POINTER- Able to set the location of zoom center D-Zoom is available to ~ 32x. (See page 26 for additional details/instructions.)



- Set the direction of video by MIRROR/FLIP before setting POINTING ZOOM. Otherwise location of zoom center could be different from your intention.

## 7-9. PRESET ZOOM

Able to zoom into a preset location using the PTZ functions.

PRESET ZOOM	
D ZONE NUM	1
ZONE VIEW	ON ↵
H-POS	5
V-POS	5
O-ZOOM RATIO	OX2.0
D-ZOOM RATIO	DX2.0
STAYING ZOOMING	3sec
RETURN	RET ↵

By Remote Controller only.

- **ZONE NUM** : Select Preset zone number 1~4.
- **ZONE VIEW** : ON displays selected zone preset view.
- **H-POS** and **V-POS** : Adjust the size and position of the preset zone.

# Operating Instructions

- O-ZOOM RATIO: Set the Optical Zoom Ratio from OX 1.1~OX3.0(OX2.4)
- D-ZOOM RATIO: Set the Digital Zoom Ratio from DX 1.1~DX5.0
- STAYING ZOOMING : Sets the duration time for preset zoom area.

## 8. SYSTEM

SYSTEM	
D TV SYSTEM	EU(PAL)
RESOLUTION	1080P
COMM. SETUP	↓
LANGUAGE	ENG ↕
FACTORY DEFAULT	NO
RETUTN	RET ↓

### 8-1. TV SYSTEM (default: US or EU)

: Selects HDTV standards for US (60HZ) or EU(50HZ). By this selection, 2nd analog video output switches to NTSC or PAL accordingly.

### 8-2. RESOLUTION (default: 1080P)

: Three resolutions, 1080P/720P(SCALED)/720P(CROPPED) are available. 1080P outputs 1920x1080 video at the frame rate of 30P/25P. 720P(SCALED) Image is scaled down from 1080P and outputs 1280x720 video without loss of field of view at the frame rate of 30P/25P. 720P(CROPPED) image is cropped at the center area from the image sensor and outputs 1280x720 video at the frame rate at 60P/50P but the image refresh rate is 30P/25P. Cropped image has narrowed field of view

### 8-3. COMM. SET UP

: COMM. SETUP defines the CAM ID, BAUD RATE and PROTOCOL. Data length, stop bit and parity are fixed to 8bit, 1stop bit and no parity bit.

- CAM ID – Assigns the camera ID from 1~255 for the comm. address.
- BAUD RATE – Selects the baud rate from 2400~115200.
- PROTOCOL – Selects the comm. Protocol from PELCO-D/P or VISCA.

*( Refer to 'TIP' for setting RS-485 communication with PTZ Controller)*

### 8-4. LANGUAGE (default: ENG)

: 8 languages are available ENGLISH, TURKISH, GERMAN, FRENCH, ITALIAN, SPANISH, POLISH and JAPANESE.

### 8-5. FACTORY DEFAULT (default: NO)

: RECALL ↕ reloads and saves the factory defaults.

# Operating Instructions

## Detail Function Description

### SMART MOTION ZOOM

SMART MOTION ZOOM enlarges the area defined by a yellow window to a full size image when motion is detected in the black window.

SMART MOTION ZOOM window can be re-sized by adjusting D-ZOOM RATIO and moved by H-POS and V-POS

UNLIKE the conventional zoom which can zoom in/out the center area of image only, the flexible zoom location and area, SMART MOTION ZOOM differentiates its usefulness from others.

That is, a conventional camera installed in the corner of the ceiling can zoom the center of the floor in a room and result in losing the image of a door on the side wall. However, SMART MOTION ZOOM can be set to see the door side and zoom in that area without missing the IMPORTANT security point.

SMART MOTION ZOOM		
▷	ZONE VIEW	OFF
	H-POS	10
	V-POS	10
	O-ZOOM RATIO	OX2.0
	D-ZOOM RATIO	DX2.0
	MOTION CHK CUNT	3
	RETURN	RET ↓

- H-POS (10) - Moves MOTION ZOOM area(Yellow window) horizontally
- V-POS (10) - Moves MOTION ZOOM area(Yellow window) vertically
- O-ZOOM RATIO (OX2.0) - Sets the area size to be Optically zoomed when motion occurs in the black window
- D-ZOOM RATIO (DX2.0) - Sets the area size to be Digitally zoomed when motion occurs in the black window
- MOTION CHK COUNT (2) - SMART MOTION ZOOM is activated after the motion in MOTION CHK COUNT are detected in a certain period.

For example, SMART MOTION ZOOM is activated after set # of triggers by motion.

# Operating Instructions

## POINTING ZOOM

This camera has a very useful and powerful feature, POINTING ZOOM, which can zoom in/out any area.


POINTING ZOOM is the ability to zoom into an off center location using the PTZ Zoom in/out feature when connected via RS485

Use H-POINTER and V-POINTER to move the Yellow box to set the position of the center of the Zoom.

UNLIKE the conventional zoom which can zoom in/out the center area of image only, the flexible zoom location and area, POINTING ZOOM differentiates its usefulness from others.

That is, a conventional camera installed in the corner of the ceiling can zoom the center of the floor in a room and result in losing the image of door on the side wall. However, POINTING ZOOM can be set to see the door side and zoom in that area without missing the IMPORTANT security point.

Set D-Zoom Pointer			
D	H-POINTER	10	
	V-POINTER	10	
	RETURN		RET ↵

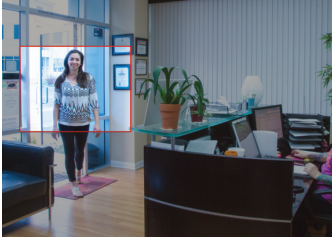


- H-POINTER (10):  
Sets the horizontal location of area to be zoomed by POINTING ZOOM.
- V-POINTER (10):  
Sets the vertical location of area to be zoomed by POINTING ZOOM.

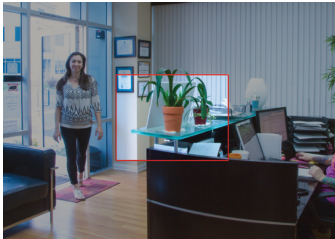


# Operating Instructions

\* SMART MOTION and POINTING ZOOM VS. Conventional Zoom









Smart Motion and Pointing Zoom



Conventional Zoom

# Operating Instructions

## **TIP** Setting for Zoom Function with PTZ Controller

- Enter the MENU :  
Press buttons 9+5+PSET (PRESET) 
- Set the Preset Zoom :  
Press buttons 1(or ~4)+PSET (PRESET) 
- Move the cursor in the MENU :  
Moves UP/DOWN/LEFT/RIGHT Joy stick 
- D-Zoom IN: Press button TELE or Spin the joystick to clockwise.  
• D-Zoom OUT: Press button WIDE or Spin the joystick to counter-clockwise. 
- Select or Choose value in the MENU :  
Press button OPEN (IRIS OPEN) 
- Exit the Preset Zoom mode :  
Press buttons 3+4+PSET (PRESET) 

Detailed Specifications	VTC-C2BAZE39	VTC-C2BAZE922
Sensor	1/3" 2.1 MegaPixel Progressive Scan CMOS	
Resolution	2.1 MegaPixel (1080p / 720p)	
S/N	More than 50 dB (AGC Off)	
Video Output	Selectable: 1x HD-SDI (BNC) / EX-SDI (BNC) and 1x SD CVBS (BNC)	
IR Illuminators	N/A	
IR Color Temp.	N/A	
IR Range	N/A	
Dynamic Intensity Smart IR LEDs	N/A	
Lens	MegaPixel IR Corrected 3-9mm Motorized AFZ	MegaPixel IR Corrected 9-22mm Motorized AFZ
Auto Focus Zoom	YES - 3x Smart Motion Zoom	YES - 2.4x Smart Motion Zoom
Digital Zoom	0 ~ x32	
Minimum Illumination	0.0008 Lux (@AGC Max. DSS x2)	
Day/Night	Mechanical IR Cut Filter (True Day/Night)	
Electronic shutter speed	Auto (1/ 30sec ~ 1/ 60,000sec)	
White Balance	ATW / ATWext / One Push / Manual	
Brightness	YES	
DSS (Sens-Up)	OFF / AUTO / X2 ~ X32	
DNR	3D-DNR	
WDR	YES	
Privacy Zones	YES (10 Zones)	
Motion Detection	YES	
ACE (Adaptive Color Enhancement)	YES	
Advanced OSD Functions	Motion Activated Pointing Zoom, Defog, Dynamic IR, BLC/HLC, Motion Deblur, Pixel Defect Compensation, Title Set, Mirror, Flip	
Communication	RS-485 (Pelco® D/P)	
HD Transmission Range	Up to 1000' (Depending on cable characteristics and integrity)	
Weather Resistance Rating	N/A	
Cooling Fan	N/A	
Operating Conditions	-4°-122°F (-20°-50°C) < 80% RH	
Input Voltage	12VDC / 24VAC (Dual Voltage)	
Power Consumption (12VDC)	500mA (6Watt)	
Power Consumption (24VAC)	350mA (4.2Watt)	
Dimensions	2.99" x 2.83" x 4.92" (W x H x L)	



**CONSIDER THESE OTHER  
GREAT PRODUCTS FROM**



## **VT-HDOCE Series On Cue Series 4, 8, and 16 Channel Real Time 1080p EX-SDI Digital Video Recorders**

- 4, 8 OR 16 CH EX-SDI / Analog Inputs (hybrid) with Full 1080p Camera Support
- Now Supporting Cable distance of up to 1000' using RG59!\*
- Hybrid Operation over COAX for HD-SDI, 960H, and D1 Cameras
- Simple plug and play, point-to-point connection from camera to DVR
- Real Time Recording on all channels at 1080p (VT-HDOCE4E: 120fps), (VT-HDOCE8E: 240fps), (VT-HDOCE16E: 480fps)
- HDMI, VGA, and Spot BNC Outputs
- Up to 5 Internal SATA2/SATA3 HDD Slots supporting up to 20TB (5 x 4TB HDD) using Advanced HDD Format
- External SATA Port (eSATA) Supporting up to 5x External via eSATA
- Pentaplex Operation (Playback, Recording, Backup, Network)
- Alarm In/Out
- Per channel Image Adjustment
- 4 Channel Audio In
- 32 x 24 Motion Detection Grid
- Multi channel Spot output
- Panorama (Thumbnail) Search
- Remote Viewing via CMS Software, Internet Explorer, and Mobile Phones (iOS/Android), Mac OSX App
- Linear digital zoom for live and playback
- Up to 7 Simultaneous Network/Remote Connections
- 256 Camera Remote Viewing via CMS Software
- RS485 Communication port

## LIMITED PRODUCT WARRANTY

*VITEK products carry a three (3) year limited warranty. VITEK warrants to the purchaser that products manufactured by VITEK are free of any rightful claim of infringement or the like, and when used in the manner intended, will be free of defects in materials and workmanship for a period of three (3) years, or as otherwise stated above, from the date of purchase by the end user. This warranty is nontransferable and extends only to the original buyer or end user customer of a VITEK Authorized Reseller.*

*The product must have been used only for its intended purpose, and not been subjected to damage by misuse, willful or accidental damage, caused by excessive voltage or lightning.*

*The product must not have been tampered with in any way or the guarantee will be considered null and void.*

*This guarantee does not affect your statutory rights.*

*Contact your local VITEK Reseller should servicing become necessary.*

*VITEK makes no warranty or guarantee whatsoever with respect to products sold or purchased through unauthorized sales channels. Warranty support is available only if product is purchased through a VITEK Authorized Reseller.*



28492 CONSTELLATION ROAD VALENCIA, CA 91355  
[WWW.VITEKCCTV.COM](http://WWW.VITEKCCTV.COM)

Version 1.0  
June 2015