



## **VTC-TTB42R2F VTC-TTB36R2V**

**2.1 Megapixel Indoor/Outdoor  
HD-TVI IR Bullet Cameras**



### **FEATURES**

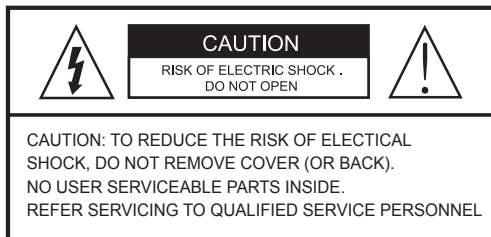
- 1/3" 2.1 Megapixel Progressive Scan CMOS image sensor
- 2.1 MegaPixel Video Transmission over COAX cable at distances of up to 1500' using HD-TVI Technology\*
- 2.8~12mm Varifocal Lens (VTC-TTB42R2V) / 3.6mm Fixed Iris Lens (VTC-TTB36R2F)
- 42 Infrared LED's with 150' IR Range (VTC-TTB42R2V) / 36 Infrared LED's with 120' IR Range (VTC-TTB36R2F)
- Digital Wide Dynamic Range (D-WDR)
- True Mechanical Day/Night function by ICR
- 3D-DNR Noise Reduction
- IP66 Weather Resistance
- 12VDC Operation



# VITEK

# Safety Precaution

- To prevent electrical shock and risk of fire hazards, do not expose this unit to rain or moisture and only use specified power source..



The symbol is intended to alert the user to the presence of uninsulated "dangerous voltage" within the product's enclosure that may be of sufficient magnitude to constitute a risk of electrical shock.



The symbol is intended to alert the user to the presence of important operating and maintenance (servicing) instructions in the literature accompanying the unit.


## • Warning :

This equipment has been tested and found to comply with the limits for a Class A digital device, pursuant to part 15 of the FCC Rules. These limits are designed to provide reasonable protection against harmful interference when the equipment is operated in a commercial environment. This equipment generates, uses, and can radiate radio frequency energy and, if not installed and used in accordance with the instruction manual, may cause harmful interference to radio communications. Operation of this equipment in a residential area is likely to cause harmful interference in which case the user will be required to correct the interference at their own expense.

## • Caution :

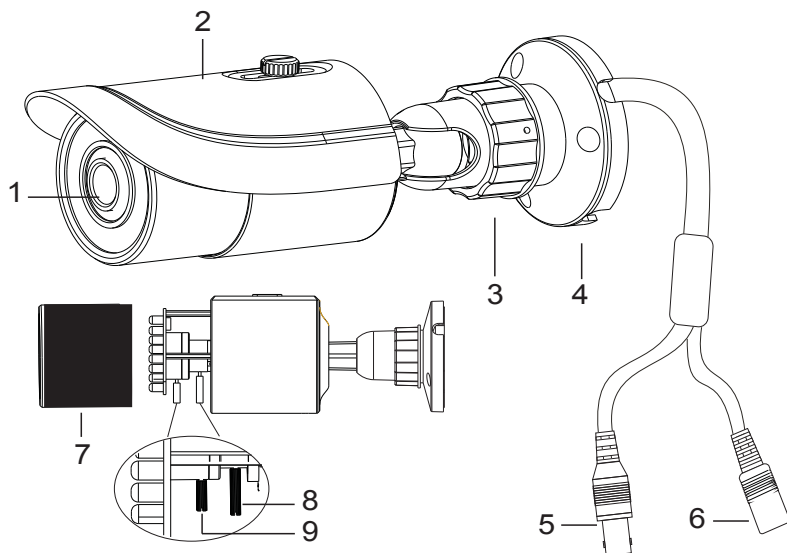
Any changes or modifications in construction of this device which are not expressly approved by the party responsible for compliance could void the user's authority to operate the equipment. Main power quality should be that of a typical commercial environment. If the user of the model requires continued operation during power interruptions, it is recommended that the device be powered from an uninterruptible power supply (UPS).

# Components and Accessories

Camera		Screws	
User Manual		Drill Template	

## Overview

This camera series supports both fixed and varifocal lenses. Please note that the zoom and focus features mentioned below are only available on the varifocal lens version.

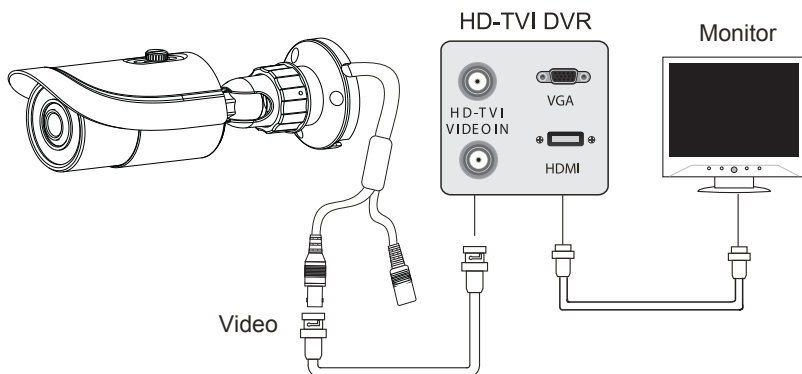


1	Lens	6	Power Cable
2	Sun Shield	7	Lens Cover
3	Mount Lock	8	Zoom*
4	Mount Base	9	Focus*
5	Video Cable		

\*Optional

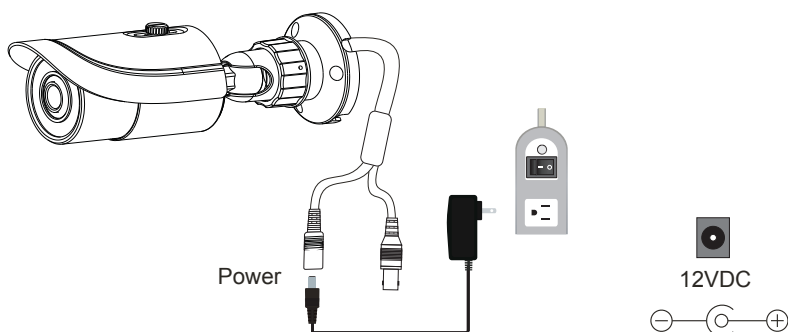
# Video Connection

Connect the video connector to a BNC patch cable.



# Power Connection

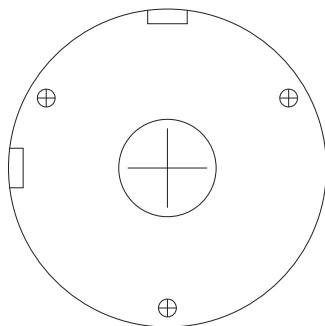
Connect the power connector to a 12 VDC power adaptor.



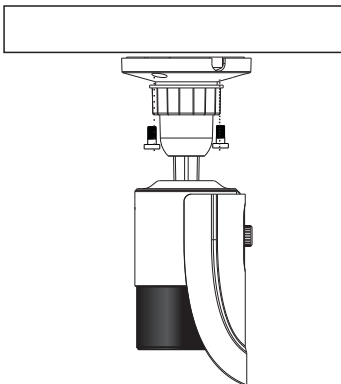
# Installation

Before start, please make sure that the wall or ceiling is strong enough to withstand 3 times the weight of the camera. The mounting steps are as follows:

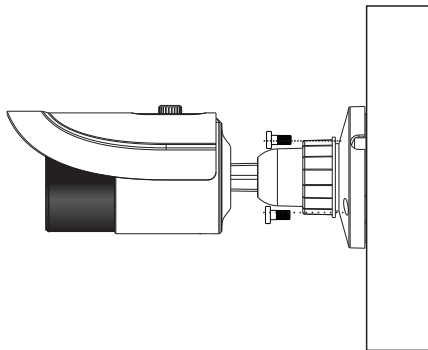
1. Attach the drill template to the place where you want to install the camera, then drill 3 screw holes and 1 cable hole (if you want to route the cables through the mounting base) according to the drill template



2. Route the cables and connect the power & video cables, then secure the mounting base to the ceiling or wall with screws.



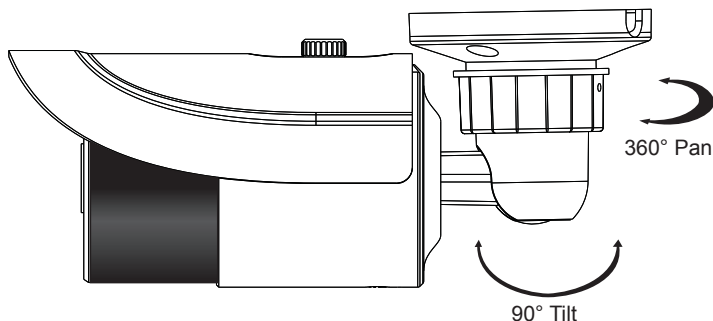
Ceiling Mounted



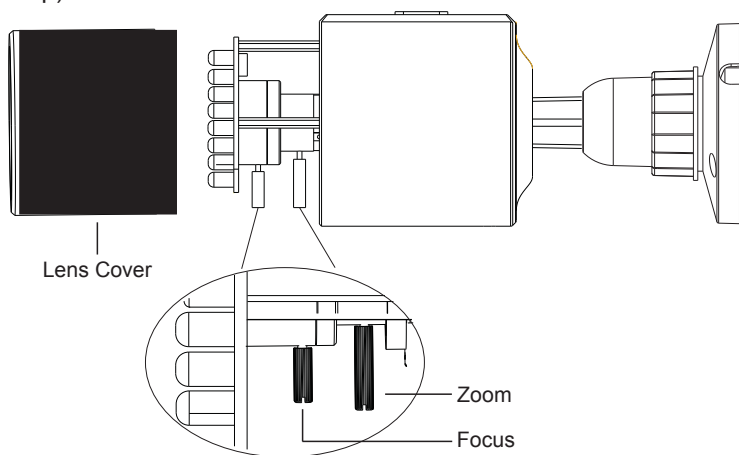
Wall Mounted

# Installation

3. Loosen the mount lock to adjust the Pan and Tilt of the camera, then tighten the mount lock to secure the viewing angle adjustments.



4. To adjust the lens, start by removing the Lens Cover, then adjust the Focus and Zoom levers to achieve a clear image. Replace the Lens Cover. (if your camera is Fixed lens, please skip this step)



5. Carefully remove the protective film from the lens to complete the installation.

Detailed Specifications	VTC-TTB42R2F	VTC-TTB36R2V
Image Sensor	1/3" CMOS (AR0330 + NVR2421 + TP2801)	
Video Compression	Standard H.264	
Resolution	1080P (2 MegaPixel)	
Effective Pixels	1920(H) x 1080(V)	
Signal System	PAL/NTSC	
Synchronization	Internal	
Lens	3.6mm Fixed	2.8 ~ 12mm (Vari-Focal)
S/R Ratio	>52dB (AGC OFF)	
Auto Gain Control	OFF ~ 44.8dB	
Min Illumination	0 Lux (LED ON)	
IR LEDs	42	36
IR Distance	150'	120'
Color-B/W Auto Switch	Yes	
Electronic Shutter	1/50s ~ 1/67500s	
White Balance	AWB	
WB Range	2300 ~ 9600K	
ICR	Yes	
BLC	Yes	
WDR	Digital WDR	
Transmission Distance	Up to 1500' (Depending on cable characteristics & integrity)	
Noise Reduction	Yes	
Video Output	BNC x 1	
Weather Resistance	IP66	
Power Supply	DC 12V ( $\pm 10\%$ )	
working Environment	-4 ~ 122 / 10% ~ 90% Humidity	
Weight	20.81 oz. / 1.30 lbs. / 590g	21.16 oz. / 1.32 lbs. / 600g
Dimensions	3.43 x 8.62" (87mm x 219mm) Dia x L	3.43 x 8.62" (87mm x 219mm) Dia x L

# LIMITED PRODUCT WARRANTY

*VITEK products carry a three (3) year limited warranty. VITEK warrants to the purchaser that products manufactured by VITEK are free of any rightful claim of infringement or the like, and when used in the manner intended, will be free of defects in materials and workmanship for a period of three (3) years, or as otherwise stated above, from the date of purchase by the end user. This warranty is nontransferable and extends only to the original buyer or end user customer of a VITEK Authorized Reseller.*

*The product must have been used only for its intended purpose, and not been subjected to damage by misuse, willful or accidental damage, caused by excessive voltage or lightning.*

*The product must not have been tampered with in any way or the guarantee will be considered null and void.*

*This guarantee does not affect your statutory rights.*

*Contact your local VITEK Reseller should servicing become necessary.*

*VITEK makes no warranty or guarantee whatsoever with respect to products sold or purchased through unauthorized sales channels. Warranty support is available only if product is purchased through a VITEK Authorized Reseller.*



28492 CONSTELLATION ROAD VALENCIA, CA 91355  
WWW.VITEKCCTV.COM

Version 1.0  
June 2015