


## Front Panel VT-EHL Controls



- 1) CONTROL PAD:**  
**CURSOR KEYS** Navigates the Menu System  
**ENTER** Apply settings or Select an item  
**RETURN** Cancel or go to Previous Menu

- 2) PLAYBACK CONTROLS:**  
  
 Reverse playback  
 Pauses / Resumes playback  
 Forward playback  
 Return/Exit

- 3) FUNCTION KEYS:**  
**POWER** Turns unit On/Off  
**DISPLAY** Selects various display modes  
**SEARCH** Displays the Search Menu  
**MENU** Displays the Setup Menu

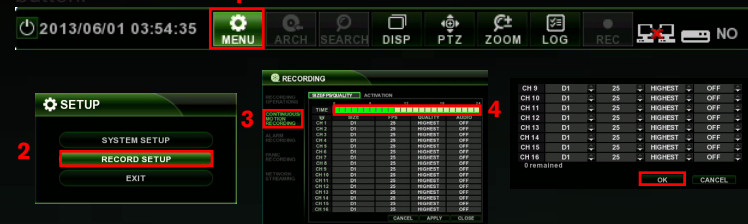


- STATUS BAR**  
**MENU** – Access to system or recording setup  
**ARCH** – Enter to Backup Menu  
**SEARCH** – Open Search Menu  
**DISP** – Change Display Mode/ Split Mode  
**PTZ** – Open PTZ Control Panel  
**LOG** – Open Live Log list with image  
**REC** – Start Panic Recording Mode

## Record Menu

### CHANGE RECORDING CONFIGURATION - PARAMETER

- From the Live Screen, click the MENU icon on the STATUS BAR
- Select RECORD SETUP
- Select CONTINUOUS/MOTION RECORDING
- Select TIME LINE
- Change SIZE, FPS, QUALITY, AUDIO at each Channel and press OK button.



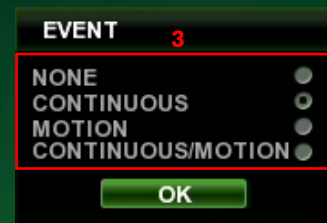
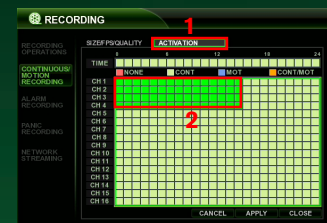
**Example: To change the recording settings between 09:00 and 18:00**

Use the CURSOR KEYS to move the green cursor to the 09:00 position and press ENTER. The cursor will change color to green to show the start position. Use the CURSOR KEYS to stretch the green cursor across to the 18:00 position, then press ENTER.

\* Try using a USB mouse to make changes quickly and easily.

### CHANGE RECORDING CONFIGURATION - ACTIVATION

- Click ACTIVATION Tab
- Select Areas (Vertical line – Channels / Parallel line – Time) and press Enter
- Select Recording Option  
 NONE – Not recording  
 CONTINUOUS - Recording continuously  
 MOTION – Start recording when 'Motion' events happens.  
 CONTINUOUS/MOTION - Recording continuously while earmarking events.



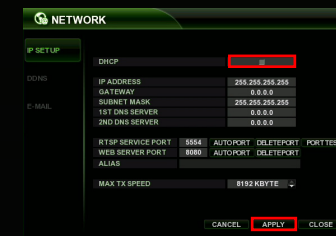
## Network IP Setup

Cycle the DHCP feature to obtain a valid IP address

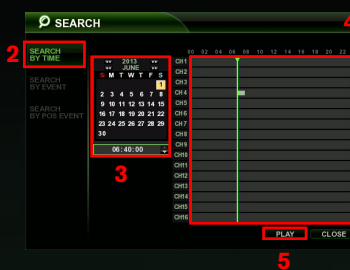
- Go to your DVR's 'main' menu, --> System Setup--> Network.
- Select 'IP SETUP'. To the right, 'DHCP' is listed. If it is 'checked', uncheck it, then select 'Apply' at the bottom of the screen. You should get a pop-up indicating the network is rebooting. (\*\*If DHCP was unchecked, see below)

- Once the network reboots, go back and 'check' DHCP and select Apply. Again, the network will reboot.
- Now, go back and 'uncheck' DHCP; this will set your DVR's IP address to STATIC

\*\*If DHCP is 'unchecked', select it, then select 'Apply' at the bottom of the screen. You should get a pop-up indicating the network is rebooting. Make note of your DVR's IP address; you will need this for port forwarding. Now, go back and 'uncheck' DHCP; this will set your DVR's IP address to STATIC.



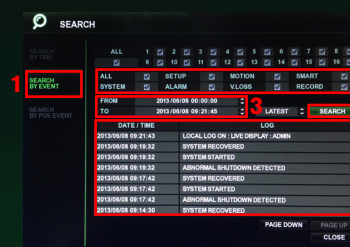
## Search



### SEARCH BY TIME

- From the Live Screen click the SEARCH icon
- Select SEARCH BY DATE/TIME
- Select Date on calendar
- Select Time line
- Select PLAY

PANO – Thumbnail style Playback  
 PLAY – Normal Multi-Channel Playback



### SEARCH BY EVENT

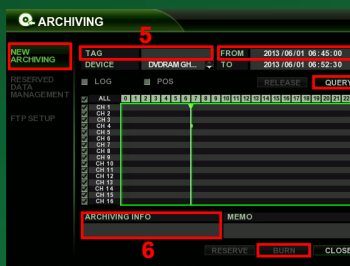
- Select SEARCH BY EVENT
- Check category for queries
- Set start /end time for querying
- Press SEARCH button
- Double Click an event on the list for playing

## Playback Control



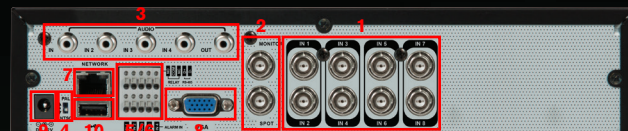
- Display – Change Multi View Mode
- Playback Control
- Backup – Start backup to external device
- Return – Exit from playback mode
- Playback Speed

## Backup - USB Device



- Click the ARCH icon from the Live Screen
- Select NEW ARCHIVING
- Set FROM/ TO time
- Press QUERY button
- Input TAG NAME for name of folder on media
- Check data size and select proper device for data
- Press BURN button
- Press START button

## Rear Panel Inputs/Outputs



- CAMERA INPUTS**  
Connect up to 8 camera inputs
- MAIN MONITOR / SPOT MONITOR OUTPUTs**  
Connect AV monitor instead of VGA output / One spot monitor can be connected
- AUDIO INPUTS & OUTPUTS**  
Up to 4 audio inputs and one audio output can be connected
- PAL / NTSC SWITCH**
- ALARM INPUTS & RELAY OUTPUT**  
Up to 4 alarm inputs can be connected and configured as high or low inputs with common ground. One Relay output can be connected and configured as high or low with common ground connection to external telemetry
- RS-485** - Devices for PTZ or Keyboard controller
- LAN** - LAN connection to a router or internal network
- VGA** - Main monitor connection to a PC monitor or LCD screen.
- DC POWER**– Connection 12V/5A adaptor
- USB Port**– USB 2.0

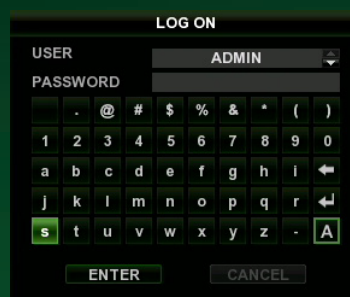
## System Bootup

Press Power button to boot up the system.

After startup diagnostics complete, the operator must logon to the system.

Default user name: ADMIN

Using the CHANNEL SELECTION buttons, key in the default password of '1234' and press the ENTER button.

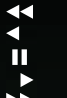


# VT-EH/EHL/EHP Quick Installation Guide

## Front Panel VT-EH Controls



- 1) CONTROL PAD:**  
**ARROWS** Navigates the Menu System  
**ENTER** Apply settings or Select an item  
**RETURN** Cancel or go to Previous Menu


- 2) PLAYBACK CONTROLS:**  
  
 Increases reverse playback speed  
 Selects reverse playback  
 Pauses / Resumes playback  
 Selects forward playback, accesses the instant playback feature  
 Increases forward playback speed

- 3) FUNCTION KEYS:**  
**POWER** Turns unit On/Off  
**DISPLAY** Selects various display modes  
**SCR MODE** Change display mode/ Split mode  
**SEARCH** Displays the Search Menu  
**MENU** Displays the Setup Menu

## Front Panel VT-EHP Controls



- 1) CONTROL PAD:**  
**CHANNEL SELECTION** Used to display individual channels in live display and playback. Also used to enter numeric passwords for various login screens  
**ARROWS** Allow to Navigate on the menu  
**ENTER** Apply or Select an item  
**RETURN** Cancel or go to Previous menu

- 2) PLAYBACK CONTROLS:**  
**JOG** Used to move footage forwards or backwards, frame by frame  
**HOLD** Locks current function of SHUTTLE WHEEL so it can be released  
  
 Increases reverse playback speed  
 Selects reverse playback  
 Pauses/ Resumes playback  
 Selects forward playback , accesses the instant playback feature  
 Increases forward playback speed

- 3) FUNCTION KEYS:**  
**POWER** Turn On/Off the system power  
**DISPLAY** Selects various display modes in live display and playback  
**PTZ** Selects PTZ mode in live display  
**SETUP** Displays the Setup menu  
**SEARCH** Displays the Search menu



## Accessing Your DVR with a Browser

You can access your VT-EH series DVR in the following ways:

1. The DVR's MAC address
2. The DVR's DDNS Host Name (by default this is set to the MAC address)
3. Your external static IP address (if you have one)

### Before you Begin:

In order to view your DVR remotely you MUST port forward BOTH the Web Server Port (the default is 8080) and the RTSP Service Port (the default is 5554). If you need assistance with port forwarding, please visit our website and review our DVR Networking Guide:

<http://www.vitekccctv.com/Downloads/VITEK-DVR-Networking-Guide.pdf>

If you need further assistance, please reference your router's manual or contact your Network Administrator/IT Professional.

### 1. MAC Address

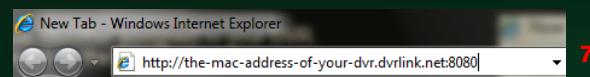
The MAC address is a unique identifier assigned to your DVR. By default, this address is listed as the DDNS Host Name.

#### Here is how to find your DVR's MAC address:

1. Access the DVR's main menu by using the remote control, or using the buttons on the front of the unit.
2. The Setup box will appear. Select "System Setup."
3. Select "System."
4. Select "System Management."
5. Select "System Information."
6. The MAC address will be displayed here.
7. Bring up a browser (ex. Internet Explorer), and type: <http://the-mac-address-of-your-dvr.dvrlink.net:8080> in the address bar. For example, if your MAC address was 001155555555, you would type: <http://001155555555.dvrlink.net:8080>.

**NOTE:** If you changed the port number, you will need to use that number, NOT 8080.

SYSTEM INFORMATION	
SW VERSION	18310.1.206.55
HW VERSION	MSFS107
VIDEO SIGNAL TYPE	PAL
DISK CAPACITY	0 GB
IP ADDRESS	255.255.255.255
MAC ADDRESS	0011550b2b0d
DDNS DOMAIN NAME	DVRLINK.NET
RTSP SERVICE PORT	5554
WEB SERVER PORT	8080



### 2. DDNS Host Name

The EH series allows you to name your DVR, and access it by that name.

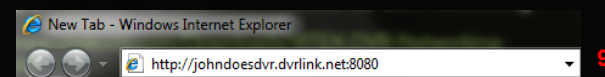
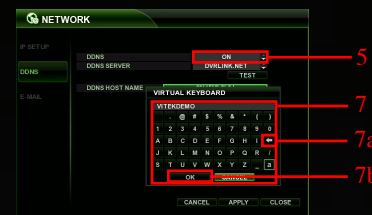
#### Steps to name your DVR

1. Access the DVR's DDNS menu: System Setup> Network>DDNS
2. Make sure DDNS is turned "ON."
3. Highlight HOST NAME and change it to the desired Host Name, then select "OK."
4. Select "CHECK" under DDNS Registration to make sure the name is available.
5. Select "TEST" under DDNS Connection to make sure you have a connection to the server.
6. Select "APPLY" at the bottom of the screen to apply your changes.
7. Bring up a browser (ex. Internet Explorer), and type: "http://your-ddns-hostname.dvrlink.net:8080/" in the address bar.

For example: if your DDNS Host Name was Johndoesdvr, you would type: "http://johndoesdvr.dvrlink.net:8080"

**NOTE:** If you changed the webport, you will need to use that number, not 8080.

9. Open a browser (ex. Internet Explorer), and type: <http://your-ddns-hostname.dvrlink.net:8080> in the address bar. For example, if your DDNS Host Name was Johndoesdvr, you would type: <http://johndoesdvr.dvrlink.net:8080>.



### 3. IP Address

If you have a STATIC IP ADDRESS, you can use this to access your DVR.

#### Steps:

- Bring up a browser (ex. Internet Explorer), and type: <http://your.static.ip.address:8080> in the address bar. For example, if your STATIC IP address was 10.10.10.10, you would type: <http://10.10.10.10:8080>

**NOTE:** if you changed the port number, you will need to use that number, NOT 8080.

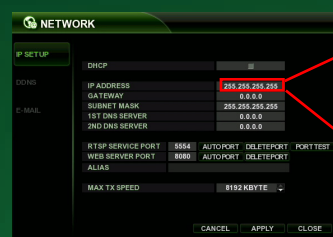
### Accessing the DVR LOCALLY

If you are on the same network as the DVR you will need to use the DVR's IP address to access it.

#### Steps:

1. Access the DVR's main menu by using the remote control, or by using the buttons on the front of the unit.
2. The Setup box will appear. Select "System Setup."
3. Select "Network."
4. "IP SETUP" should be selected by default. To the right, you should see the DVR's IP address.
5. Bring up a browser (ex. Internet Explorer), and type: <http://your.DVR's.ip.address:8080> in the address bar. For example, if your DVR's IP address was 192.168.0.2, you would type: <http://192.168.0.2:8080>

**NOTE:** if you changed the port number, you will need to use that number, NOT 8080.



If your DVR is behind a router, the IP address listed here will be a LOCAL address. You can only use this address to access the DVR locally.

If your DVR is NOT behind a router, the IP address listed here should be your PUBLIC IP address. You can use this address to access your DVR from a remote location.

## Browser Access

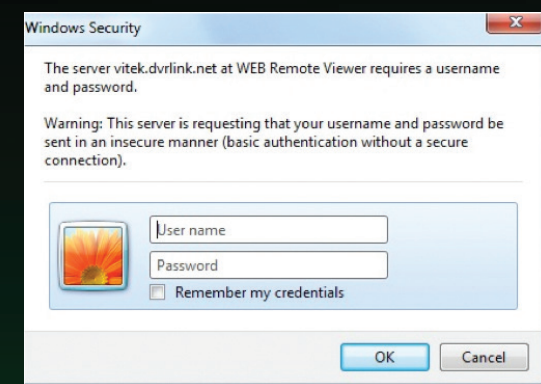
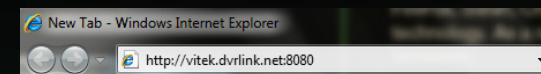
1. Type the URL or IP address into your browser.
2. Log in using defaults: Username: ADMIN (case sensitive)  
Password: 1234

You will be prompted to install ActiveX controls. Make sure you install all of these. (If you are not prompted, check your browser and/or fire-wall settings).

**NOTE:** ActiveX is a Microsoft technology that is used to add functionality to Windows programs.

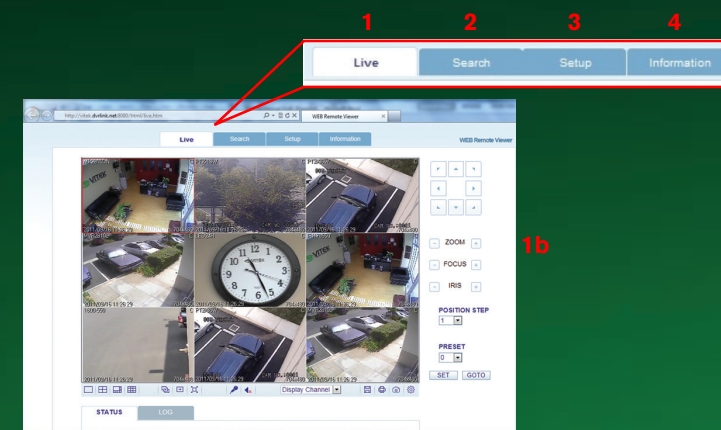
ActiveX "controls" are often used to enable Microsoft's Internet Explorer browser to view and use multimedia content embedded in web pages (for example, Flash applications). They are also used to add new functions to the browser, i.e. toolbars.

FireFox, Safari, Chrome, and other browsers do not support ActiveX technology. As a result, experiences will vary when using different browsers.

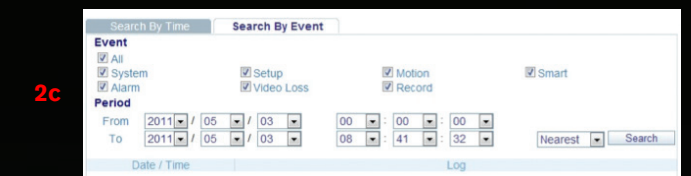


## Navigating the Browser

1. LIVE: Displays your live cameras, and camera recording status (1b)

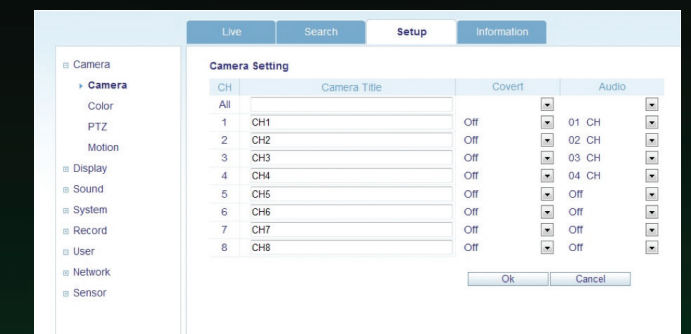


2. SEARCH: Brings up the Search Menu where you can search by Time (2b) or Event (2c)



3. SETUP: Allows access to DVR menu options (3)

4. INFORMATION: General DVR information



## Product Warranty

VITEK products carry a three (3) year limited warranty. Digital recording and storage products are also warranted for 3 years except for the hard drives which carry a five year independent factory warranty from the hard drive manufacturer. VITEK warrants to the purchaser that products manufactured by VITEK are free of any rightful claim of infringement or the like, and when used in the manner intended, will be free of defects in materials and workmanship for a period of three (3) years, or as otherwise stated above, from the date of purchase by the end user. This warranty is non-transferable and extends only to the original buyer or end user customer of a VITEK Authorized Reseller.

This warranty shall not apply to repairs or replacements necessitated by any cause beyond the control of VITEK, including but not limited to, acts of nature, improper installation, excess moisture, misuse, lack of proper maintenance, accident, voltage fluctuations, or any unauthorized tampering, repairs or modifications. This warranty becomes VOID in the event of alteration, defacement, or removal of serial numbers.

Follow us on Twitter! [www.vitekccctv.com/vitekccctv](http://www.vitekccctv.com/vitekccctv) Friend us on Facebook! [www.facebook.com/vitekccctv](http://www.facebook.com/vitekccctv)

Subscribe to our Youtube Channel! [www.youtube.com/vitekccctv](http://www.youtube.com/vitekccctv)

Learn our port forwarding basics, DVRLink.net configurations and about our iPhone app for the VT-EH Series DVRs on Youtube!

For additional support, call our Technical Support team at 888-VITEK-70 or 661-294-8043 Monday through Friday, 7am to 8pm PST (Excluding Major Holidays).