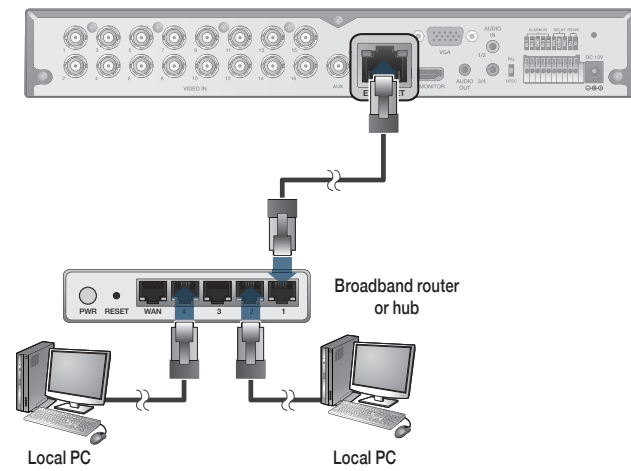


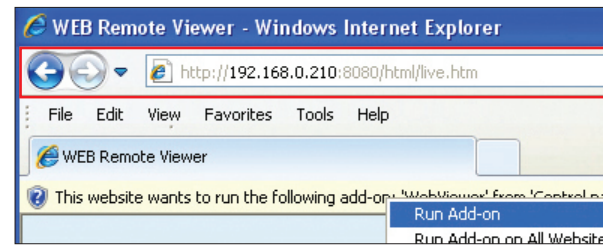
# 5

## Network Setting

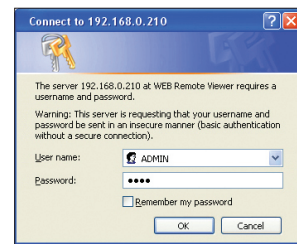
### ● NETWORK CONNECTION



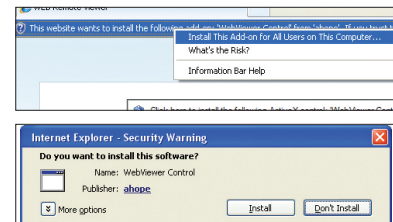
### ● ACCESSING WITH THE BROWSER



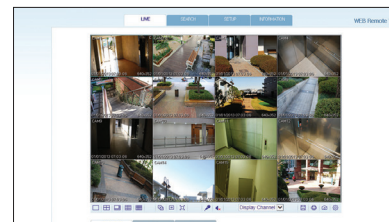
- Open the browser and enter the IP address of the DVR, or enter the URL address in the address bar.  
 ex) If using the DDNS:  
 http://00115f123456.dvlink.net:8080  
 If using an IP address:  
 http://192.168.0.210:8080  
 For more information about the router and network settings, refer to the user manual of the respective product.



- When the login dialog appears, enter the user name and password. The default ID and password  
 - User name : ADMIN  
 - Password : 1234  
 NOTE: The Username and Password are case sensitive.



- Click the upper warning bar to install the ActiveX before enabling the add-in function.
- When the security warning window appears, click <Install>.



- When the ActiveX is installed completely, you will see the live screen.  
 For more information about using the Web viewer, refer to the user manual.



# Spire Series Quick Start Guide

## 4, 8, & 16 Channel 960H Digital Video Recorders

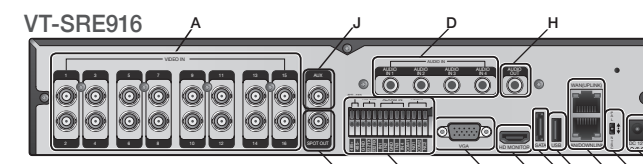
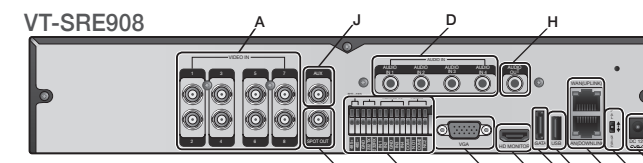
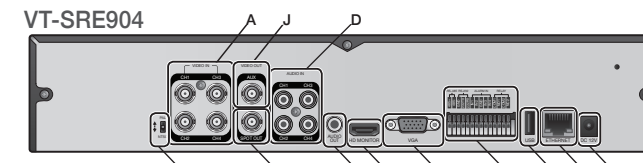
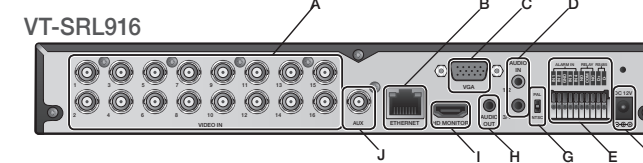
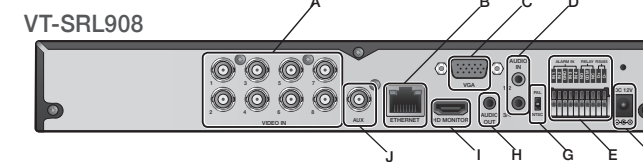
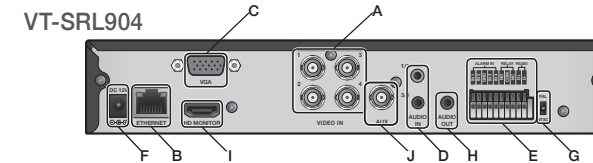


\* Complete User's Manual can be found on the included USB Flash Drive.

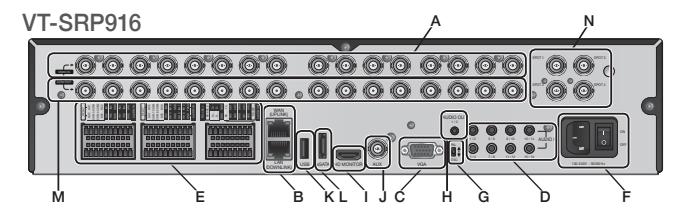
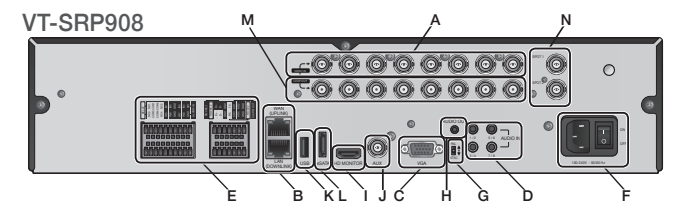
# 1

## Installation

### ● REAR VIEW



No.	Name	Description
A	VIDEO IN	Video input terminal for cameras.
B	ETHERNET	Network port for connection to the Internet, router or hub.
C	VGA	VGA monitor video output port.
D	AUDIO IN	1/2 : Audio input terminal that supports channels 1 and 2. 3/4 : Audio input terminal that supports channels 3 and 4.
E	ALARM IN	Alarm input signal port.
F	RELAY	Relay Terminal output port.
G	RS485	Ports for communication with external devices such as a PTZ camera and system keyboard.
H	DC 12V	Power input port. Connect to a 12V adaptor.
I	DIP Switch	Switch to select a video type or an output type.
J	AUDIO OUT	Port for speaker connection.
K	HD MONITOR	HDMI (HD monitor) video output port
L	AUX	Auxiliary Video Output
M	USB	USB Input
N	eSATA	External SATA Port
O	LOOP OUT	Looping Video Outputs
P	SPOT	Spot Video Output
Q	POWER	120V Power Input / On/Off Switch



Visit [www.vitekccctv.com](http://www.vitekccctv.com) for the latest updates including: Product Information, Software, Firmware, and Product Literature.

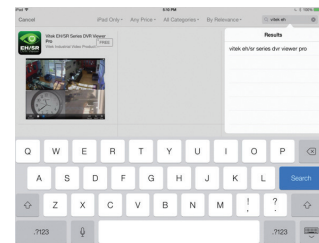
# 6

## Access to the mobile viewer

### ● HOW TO DOWNLOAD AND ACCESS THE IOS-SPECIFIC VIEWER



- From your iPhone, access App store



- Type "Spire DVR Viewer" in the Search bar

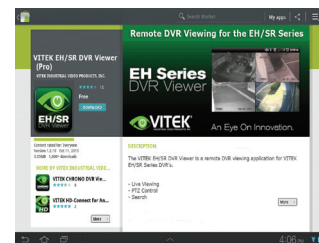


- After Installation, select "Spire DVR Viewer" again to launch the app

### ● HOW TO DOWNLOAD AND ACCESS THE ANDROID-SPECIFIC VIEWER



- From your Android phone, open the Play Store



- Type "Spire DVR Viewer" in the Search bar



- After Installation, select "Spire DVR Viewer" icon to launch the app

# 2 Getting Started

## ● LOG IN



- When the system starts, the login screen appears.
- Select the user ID and enter the password.  
The default user ID is "ADMIN"; the default password is "1234".
- Click <OK>.
  - For safe and secure use of the product, change the password after purchasing.

## ● LIVE SCREEN



## ● STATUS BAR BESIDES THE REMOTE CONTROL BUTTONS, YOU CAN ALSO USE THE BUTTONS ON THE BOTTOM STATUS BAR TO CONTROL THE DVR.

Item	Description
	Access the DVR's menu; Search, Archiving, System Setup, Record Setup, Log Out, and Shutdown.
	Show the ID of the user who has currently logged in.
	Edit the screen layout to show the status bar and timeline at all times or only when the mouse cursor hovers on the status bar/timeline.
	Used to select a split mode.
	Auto Sequence Mode.
	Display or hide the OSD menus on the screen.
	Move to the PTZ screen. You can control the PTZ operations of a PTZ-compliant camera on the PTZ screen.
	Move to the Zoom screen.

Item	Description
	Display the log list of the recent recording events.
	Select the Audio input channel.
	Start the emergency recording.
	Blinks when the event occurs. It will not blink if no action to the event has been set. Click to view information about the event that occurred.
	Check if network connection is made via an external PC or mobile device. Click this to view the details of the concurrent users and to check the network connection status.
	Show the disk space information. If you have set the disk overwrite mode, it will be displayed "OW" (Over Write) from the start point of the overwriting.
	Display the current time and date.

## ● QUICK MENU

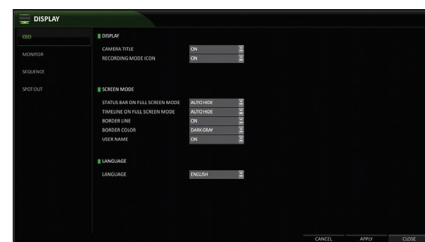
Item	Description
Channel No	Display the number of the current channel.
Play	Start playing the video of the selected channel from the specified time.
Zoom	Move to the Digital Zoom.
Snapshot Capture	Capture the current live video and save it in the .jpeg format. <ul style="list-style-type: none"> <li>Then, you can save the captured video in the HDD or export it to an external USB memory device.</li> </ul>

## ● TIMELINE

Item	Description
Timeline Date	Display the date of the current timeline. Click this to select a desired date of the timeline.
Zoom in/out the timeline	Expand or collapse the timeline.
Navigation through Timeline	Move to the previous or next point of time in the timeline. You can also use the mouse wheel to navigate through the timeline.
Timeline Bar	Represent the recorded data. The color of each bar indicates: <ul style="list-style-type: none"> <li>Green : Continuous Recording</li> <li>Red : Alarm Recording</li> <li>Blue : Motion Recording</li> <li>Yellow: Panic Recording</li> </ul>

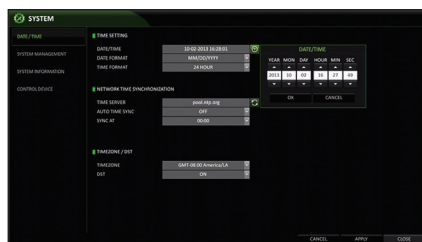
- Double-click the timeline to move to the Playback mode. Drag and drop it to make backup or event search for the specified area.

## ● LANGUAGE SETTING



- Press [SETUP] on the remote control, or select <MENU> - <SYSTEM SETUP> from the status bar.
- From <SYSTEM SETUP> - <DISPLAY>, select <OSD>.
- Select a preferred language.
- Click <APPLY>.

## ● DATE/TIME SETTING



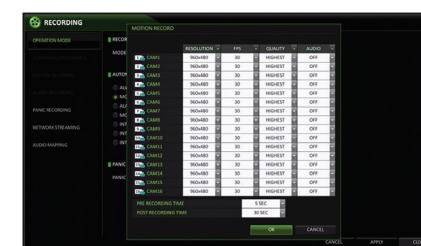
- Press [SETUP] on the remote control, or select <MENU> - <SYSTEM SETUP> from the status bar.
- From <SYSTEM SETUP> - <SYSTEM>, select <DATE/TIME>.
- Specify the display format of the current time and date.
  - As the existing data in the same time and date will be deleted if duplicates are found, back up the existing data for later use.
- Click <APPLY>.

# 3 Recording

## ● AUTOMATIC RECORDING SETTING



- Press [MENU] on the remote control, and use the direction buttons to select <RECORD SETUP> and press [ENTER]. Alternatively, you can select <MENU> - <RECORD SETUP> from the status bar.
- Set <RECORD SETUP MODE> to <AUTO CONFIGURATION>.
- Select "Automatic Record Configuration Mode".



- ALWAYS HIGH VIDEO QUALITY : Recording will proceed in the best quality regardless of the event at all times.  
As this option will always make recording in the best quality, the recording period is the shortest compared to the other record modes.
- MOTION RECORD : Recording will proceed only if a motion is detected.
- ALARM RECORD : Recording will proceed only if an alarm event occurs.
- MOTION/ALARM RECORD : Recording will proceed only if a motion is detected or an alarm event occurs.
- INTENSIVE MOTION RECORD : Recording will be performed in a low quality. However, the quality will switch to high if a motion event is detected.
- INTENSIVE ALARM RECORD : Recording will be performed in a low quality. However, the quality will switch to high if an alarm event occurs.
- INTENSIVE MOTION/ALARM RECORD : Recording will be performed in a low quality. However, the quality will switch to high if an alarm event occurs or a motion is detected.

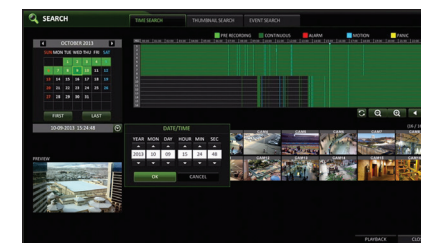
- Click <APPLY>.

# 4 Search

## ● TIME SEARCH



- From the <SEARCH> menu, select <TIME SEARCH>.
- Specify the search date and time from the calendar in the left corner of the screen.
- You can identify the type of the recording data by the color in the bar.



- Yellow Green (PRE RECORDING) : The pre-recording is performed on the recording data after you set the <PRE RECORDING TIME> from <OPERATION MODE>.
- Green (Continuous) : The continuous recording is performed on the recording data.

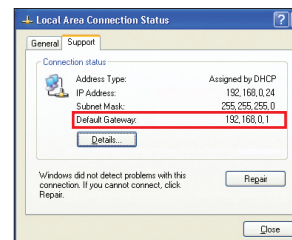
- Red (Alarm) : The alarm event recording is performed on the recording data.
  - Blue (Motion) : The motion event recording is performed on the recording data.
  - Yellow (Panic) : The panic manual recording is performed on the recording data.
- Click to move to a desired start time in the time bar, or use the buttons at the bottom of the status bar to make search.

- Select an item to play and click <PLAY>. Click to move to a desired time, or simply double-click a desired time in the time bar to play the video data on that time.

- For details on thumbnail search and event search, refer to the user manual.

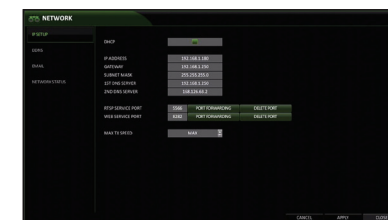
# 5 Network Setting

## ● NETWORK CONNECTION SETTING TO CONFIGURE THE NETWORK SETTINGS



- Connect the DVR to the router.
- Connect the [WAN/UPLINK] port of the router directly to the fixed IP LAN cable, or connect it to the ADSL modem.
- When done, configure the port forwarding for the RTSP and Web Service ports by clicking Port Forwarding.
- Click <PORT FORWARDING> for each. You will see the confirmation message. Click <APPLY> and exit the menu.
- The network settings of the DVR are complete.

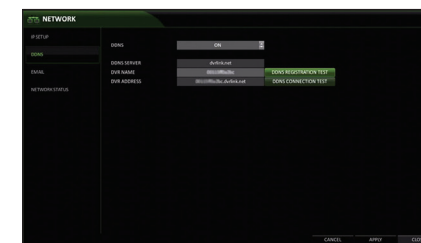
Note: Some router models may not support UPNP. If you see a failure message after clicking <PORT FORWARDING>, refer to the user manual of the router and configure the port forwarding settings manually.



- From the main menu of the DVR, move to <SYSTEM SETUP> - <NETWORK> - <IP SETUP>.
- Use DHCP to get an IP address from the router, or manually enter an IP address that falls within the private IP range provided by the router.
  - IP ADDRESS : 192.168.0.123 (enter the network IP address.)



- GATEWAY : 192.168.0.1 (enter the gateway address.)
- SUBNET MASK : 255.255.255.0 (type the subnet mask.)
- 1ST, 2ND DNS SERVER : 168.126.63.1 (enter the address of a DNS server.)



- When the network configuration is complete, proceed with the DDNS settings.  
From the main menu of the DVR, move to <SYSTEM SETUP> - <NETWORK> - <DDNS>.
- Rename the DVR. (The default name of the DVR is the MAC address of the DVR.)  
Enter a desired DVR name (combination of characters and numbers).

- When done, click <DDNS REGISTRATION TEST> and <DDNS CONNECTION TEST> in this order. If you receive a success message. Check the DVR address and click <APPLY> at the bottom.
- Check the DVR address and the Web service port in the network settings to make sure that any Internet-connected PC can access the DVR.
- If you type "mydvr" for the DVR name from the DDN item, the address of the Web viewer is "http://mydvr.dvrlink.net: 8080".