

VT-TTR SERIES QUICK START GUIDE



FEATURES:

- Full Tribrid Operation with 4 / 8 / 16 Channel HD-TVI/Analog BNC Inputs + IP Camera Support
- 1-Channel (VT-TTR410), 4-Channel (VT-TTR820) and 8-Channel (VT-TTR1620) IP Camera Support
- 120fps @ 720p / 60fps @ 1080p (VT-TTR410), 240fps @ 720p / 120fps @ 1080p (VT-TTR820) and 480fps @ 720p / 240fps @ 1080p (VT-TTR1620) Recording
- Simple plug and play, point-to-point connection from camera to DVR
- H.264 Compression
- HDMI & VGA Video Outputs
- 1 Internal SATA2/SATA3 HDD Slots supporting up to 4TB (1 x 4TB HDD) Internal Storage 2 Internal (VT-TTR410), SATA2/SATA3 HDD Slots supporting up to 8TB (2 x 4TB HDD) Internal Storage (VT-TTR820 / VT-TTR1620)
- Supports 4TB Hard Drives
- 2-Way Audio
- Pentaplex: Live Display / Record / Playback / Backup / Remote Access
- PTZ Control over RS-485
- Applications for iOS & Android
- Remote Viewing over the Internet via Web Browser or LAN
- Mac OS® Client & CMS Central Management Software Included
- Supports both Dynamic and Static IP Addresses
- Control locally via Front Panel Controls, USB Mouse, or with the Included IR Remote control

SETUP & CONFIGURATION:

1. Notes

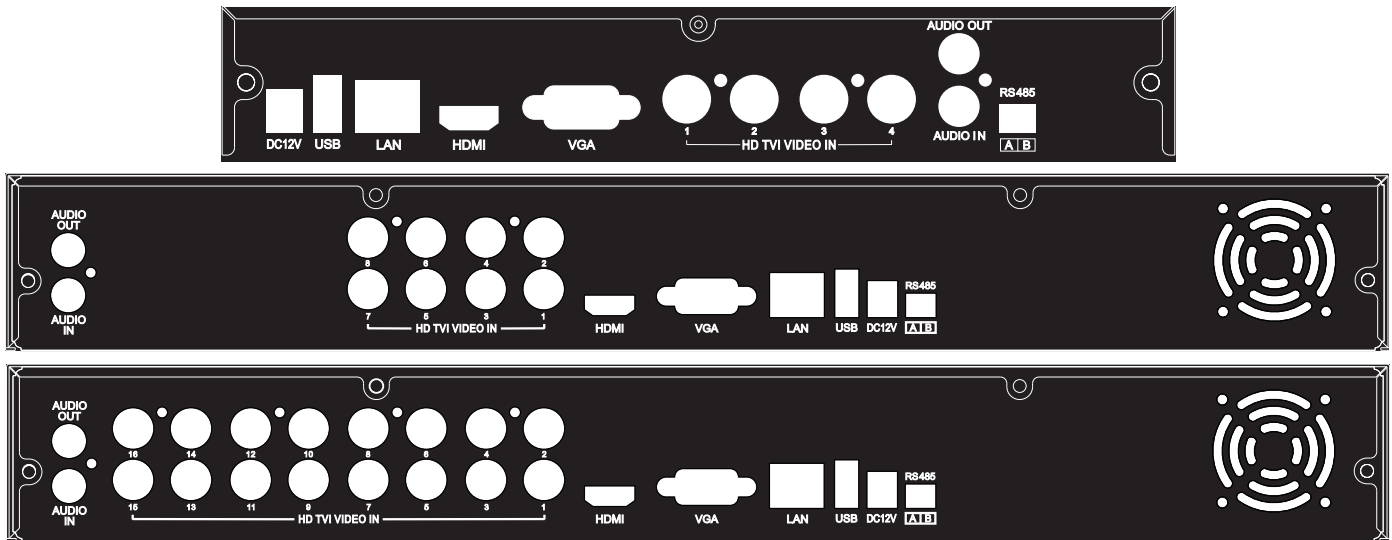
- Please read this instruction carefully for correct use of the product and preserve it for reference purposes.
- This manual is suitable for 4/8/16 CH HD TVI Hybrid DVR. All the examples and pictures used here are for reference only.
- There may be several technically incorrect places or printing errors in this manual. The updates will be added into the new version of this manual. The contents of this manual are subject to change without notice.
- To prevent electric shocks and risk of fire hazards, do NOT use other than specific power source.

2. Check Package Contents

Please confirm that the device and all accessories are included in the package. If there is any damage, shortages or defects, please contact your dealer immediately.

- | | |
|---------------------------------------|--------------------------------------|
| 1) Transcend Series DVR | 5) Rack Ears (8 & 16 Channel Models) |
| 2) IR Remote Control | 6) HDD Screws |
| 3) Quick Start Guide | 7) SATA Cables |
| 4) CD Containing Detailed User Manual | 8) USB Mouse |

3. Rear Panel Connections



Name	Description
DC12V	DC12V power input.
USB	Connect USB mouse or USB storage devices.
LAN	Network port.
HD TVI VIDEO IN	(HD-TVI signal) 1080P/720P, (analog signal) 960H/D1 video inputs.
VGA	VGA output; connect to monitor.
HDMI	Connect to high-definition display device.
AUDIO OUT	Audio output; connect to sound box.
AUDIO IN	1 CH audio input; connect to microphone.
RS 485	Connect to keyboard or speed dome. A is TX+; B is TX-.

4. Startup & Shutdown

• Startup:

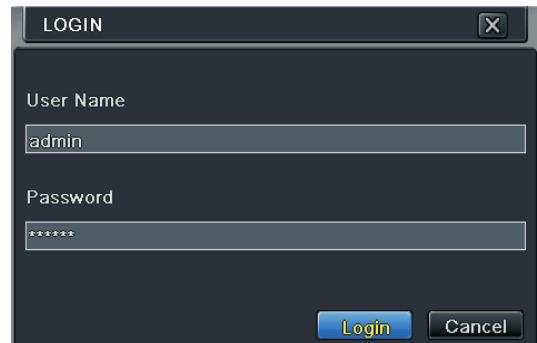
- ① Please read this instruction carefully for correct use of the product and preserve it for reference purposes.
- ② The device will boot and the power indicator will display blue.
- ③ A wizard window will pop up.

• Shutdown:

Go to “Main Menu” and then select “Shutdown” icon. This will bring up a shutdown window. The device will shut down by clicking “OK” button. Then disconnect the power.

5. Login

After the wizard setup, you can see a live image. Right click to pop up a menu toolbar. Click Main Menu button. This will take you to see a login box. The default username is admin; the default password is 123456. Enter username and password and click “Login” button to go to the main menu setup.

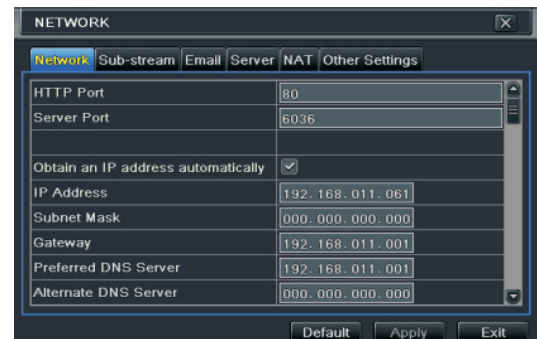


6. Network Configuration

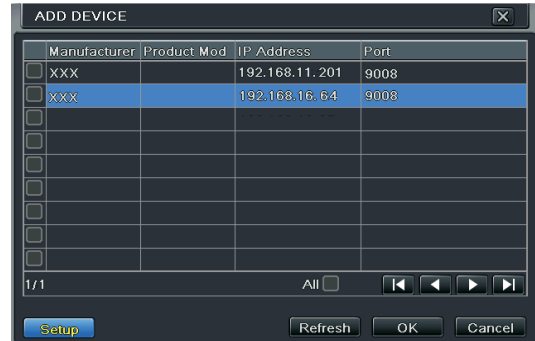
You can add additional IP (up to 8 2mp depending on model) cameras to this DVR, the following will explain network setup and adding IP cameras

► LAN

- ① Set the network of the HD TVI Hybrid DVR. Go to Main Menu → Setup → Network → Network as shown in Fig 1. Input HTTP port (the default value is 80), server port (the default port is 6036), IP address, subnet, gateway, etc. If using DHCP, please enable DHCP in both the HD TVI Hybrid DVR and the router.



- ② Go to Main Menu→IP Camera tab as shown in Fig 2. Click “Search” button to search for IP cameras in the same local network. If the IPC is not in the same network segment as the HD TVI Hybrid DVR, you can select the device and click “Setup” as in Fig 3 to change the IP address. (The IPC which supports the Onvif protocol may be added manually.)

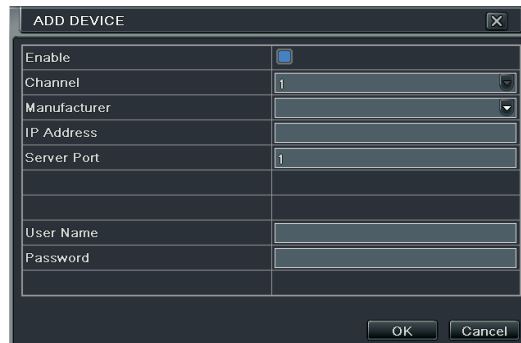


- ③ Checkmark the device you want to add and then click “OK” button to return to the previous interface to apply the settings. Status will display "Connected" if successful and will display live image. You may select the added device and click “Setup” button to modify channel, IP address as shown in Fig 5.



► WAN

- ① Go to Main Menu→IP Camera tab as shown in Fig 7. Click “Add” button to add the IP cameras. Checkmark “Enable” checkbox, select channel, manufacturer and enter IP address, server port, username and password of the IP camera. Then save the settings. The network camera must be connected over WAN. And here the IP address of the IP camera must be a WAN IP address.



7. NAT

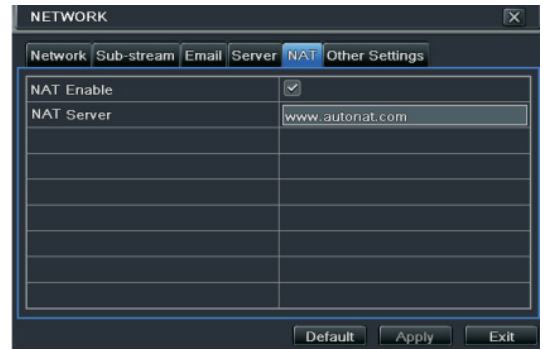
► NAT Settings

- ① Please read this instruction carefully for correct use of the product and preserve it for reference purposes. The HD TVI Hybrid DVR must be turned on and connected to the network.

8. NAT

► NAT Settings

- ① Please read this instruction carefully for correct use of the product and preserve it for reference purposes. The HD TVI Hybrid DVR must be turned on and connected to the network.
- ② Go to Main Menu→Setup→Network. Refer to Fig 1. Once the DVR has LAN and WAN network set up, customer can set NAT Feature. this feature allows customer to set custom connection with 3rd party DNS system.
- ③ Set the preferred or alternative DNS Server. Click “Apply” to save the parameters.
- ④ Go to Main Menu→Setup→Network→NAT tab. Refer to Fig 8.
- ⑤ Enable NAT and input the NAT Server (The default NAT Server is www.autonat.com) .
- ⑥ Click “Apply” to save the parameters.



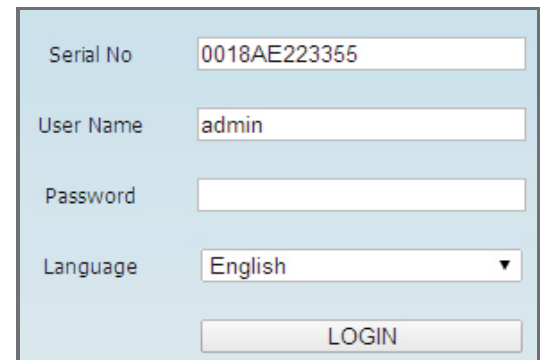
► NAT Access

After finishing the NAT settings, you can enter the NAT Server on the PC (Input <http://www.autonat.com> to go to the IE client). If this is the first time to accessing the NAT, the network will download the ActiveX automatically. After installing ActiveX successfully, it will pop up the following login box.


Serial No: The MAC address of the HD TVI Hybrid DVR (Go to Main Menu→Information→Network to check the MAC address of the HD TVI Hybrid DVR).

User Name: Enter User Name Default: admin

Password: Enter Password: Default: 123456





9. Manual Recording

Before recording, please install and format a HDD. Right click the mouse in the live interface to pop up the following menu toolbar. Recording is enabled by default. If necessary, click  to start recording. (Factory default is set to continuous recording)



10. Playback

Right click the mouse in the live interface to pop up the menu toolbar. Click the little triangle button beside  button to set playback time (eg. 5 minutes). Then click  button to play the recording from the past 5 minutes. You may control the video by clicking the corresponding buttons, such as, forward, play/pause, stop, etc. If you want to play the recording by searching a specific time and date, event or file, you may refer to the HD TVI Hybrid DVR User Manual for details.

