

Package Includes

1. Box Contents

- 1) VTC-AR2B4FN IP Infrared Bullet camera
- 2) Mounting Accessories
- 3) ENVI Series CD & Mounting Template



2. Included Accessories

3mm Hex L-wrench
Qty: 1



Wall mounting screws
Qty: 3



Anchors
If necessary, use the anchor to help secure the self tapping screws.
Qty: 3



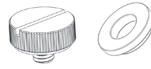
Sunshield
Qty: 1



Mounting Template
Qty: 1



Thumb Screw/Washer for Sun Shield
Qty: 1 (each)



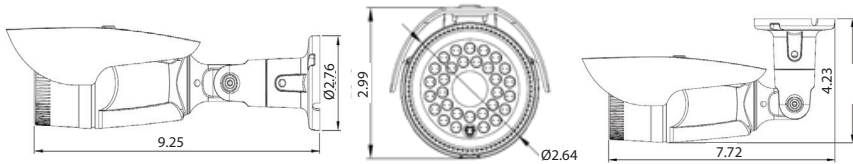
ENVI Series CD
Qty: 1



2

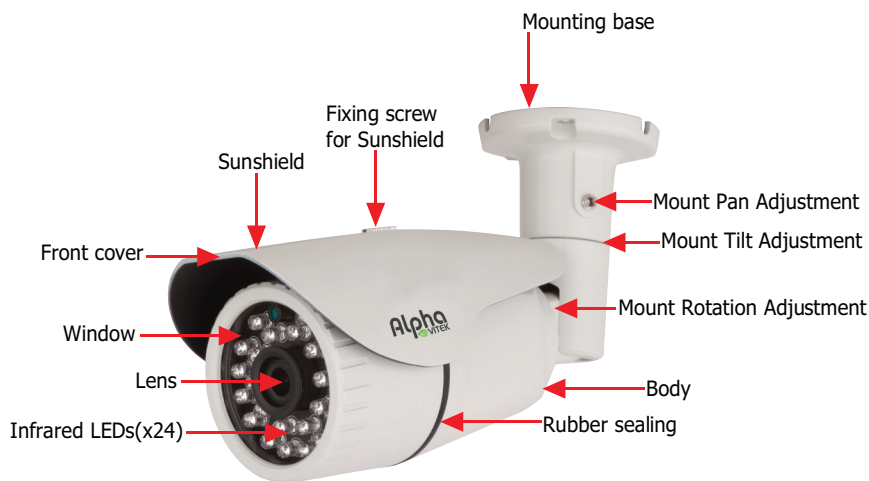
Dimensions

MEASUREMENTS: INCHES

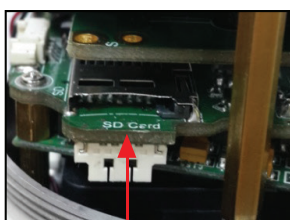


Layout

External View



Internal View



Micro SD Card Slot



IP Reset Button

3

QUICK START GUIDE

VITEK VTC-AR2B4FN
INDUSTRIAL VIDEO PRODUCTS, INC.
Alpha 2.13 MP Bullet Camera
with 3.6mm Fixed Iris Lens



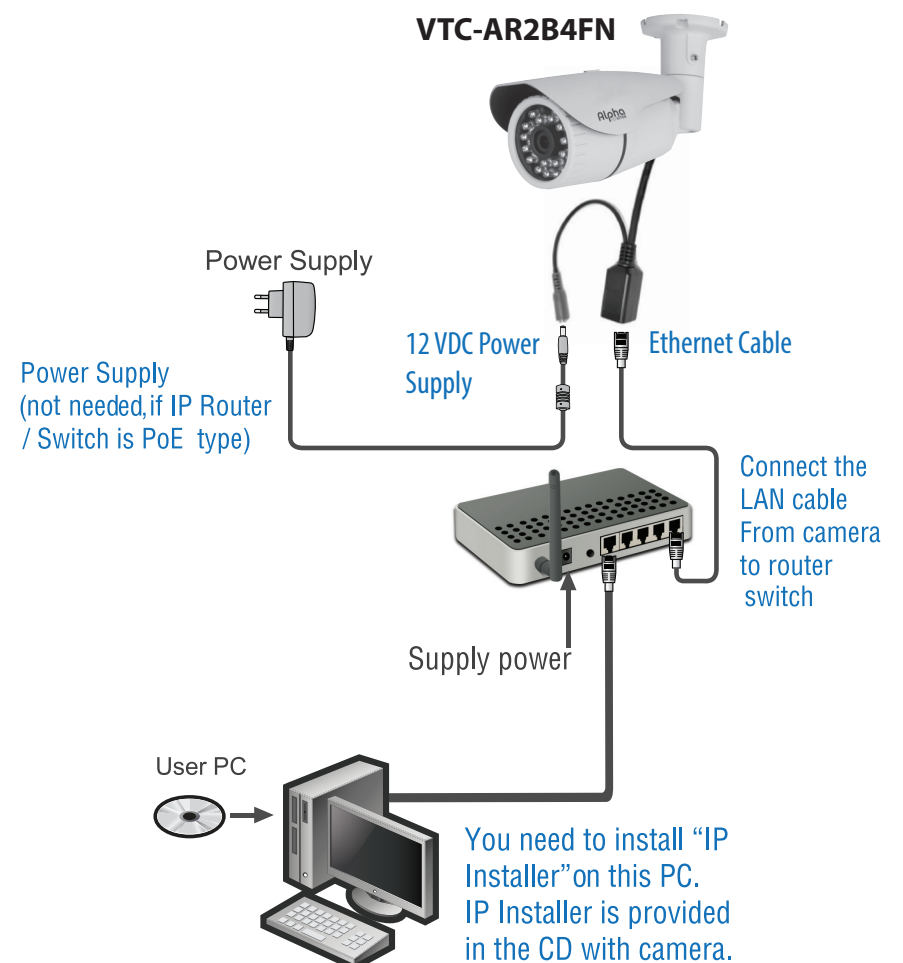
- 1/2.7" Progressive Scan CMOS
- 2.13 MegaPixel With full 1080p/720p Output
- Up to 30fps live view @ 1920x1080 (1080p)
- Built in 3.6mm Megapixel Fixed Iris Lens
- Automatic True Day/Night
- H.264/MJPEG Dual Streaming
- 24 IR LEDs with up to 50' Range
- Micro SD memory card slot for Local recording
- Advanced OSD Functions: Motion Detection & Privacy Masking
- Heavy Duty IP66 rated weather/vandal resistant aluminum construction
- 12VDCs & PoE (Power over Ethernet) Operation

Specifications & installation procedure subject to change without notice.
Visit www.vitekccv.com for the most current information available.

IPcctv
MegaPixel CCTV Over IP Networks

Alpha
VITEK

Connections

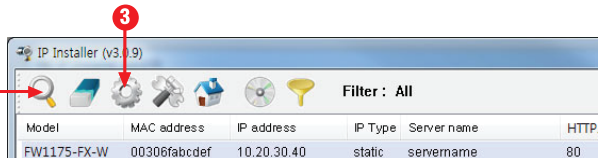


4

IP Setup

- Execute IP Installer on Desktop.
- Press **Scan button**. IP cameras under the same router will be searched and listed. It takes a few seconds. Default IP address is 10.20.30.40

- Select searched product, and press **Auto-IP setting** button.



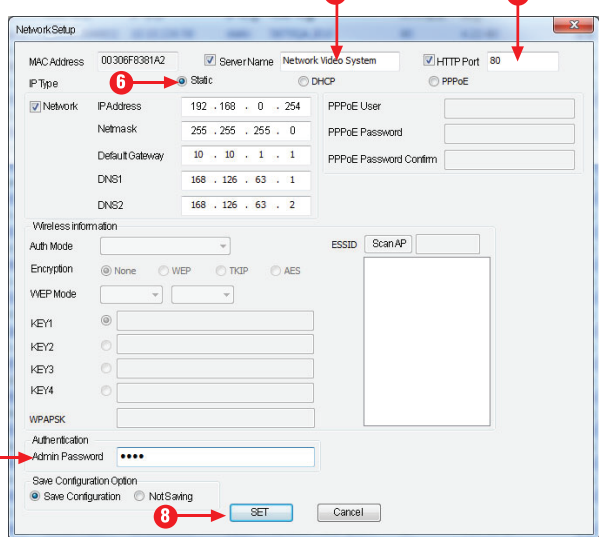
- Change the Server Name here.
- Check Http port and put **80**. This is an internal port
- IP address: You may use auto-scanned IP **192.168.0.254** as it is or you may set **Static IP** as below.
Typical IP setting is as follows.
IP address.: 192.168.0.254 (you can change the last column)
Netmask: 255.255.255.0
Gateway: 192.168.0.1
DNS1/2: You can copy the PC's network properties. This is for Internet environment.

- Input "root" here for **password**.

If you see "Do you want to change network information?" click "yes". Please wait until network information gets changed. If this IP setting is Completed correctly, you will find the changed IP address "success" in the status column.

Factory Default ID: root
Password: root

- Do not forget to press "Set".



5

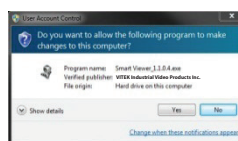
Image Viewing under the Same Router

- Please double click the selected product or click "homepage" after select product on the list.



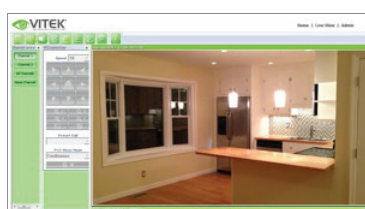
- Please click "Liveview" on top right of the screen.

* If the PC is internet-connected, Active X control should be downloaded as follows, No. 3



- Please click yes for "ActiveX Control"

* If the PC is not internet-connected, you need to install SmartViewer.exe in the CD provided with camera.



Only after installation of Active X or Smart Viewer, you can view live images.

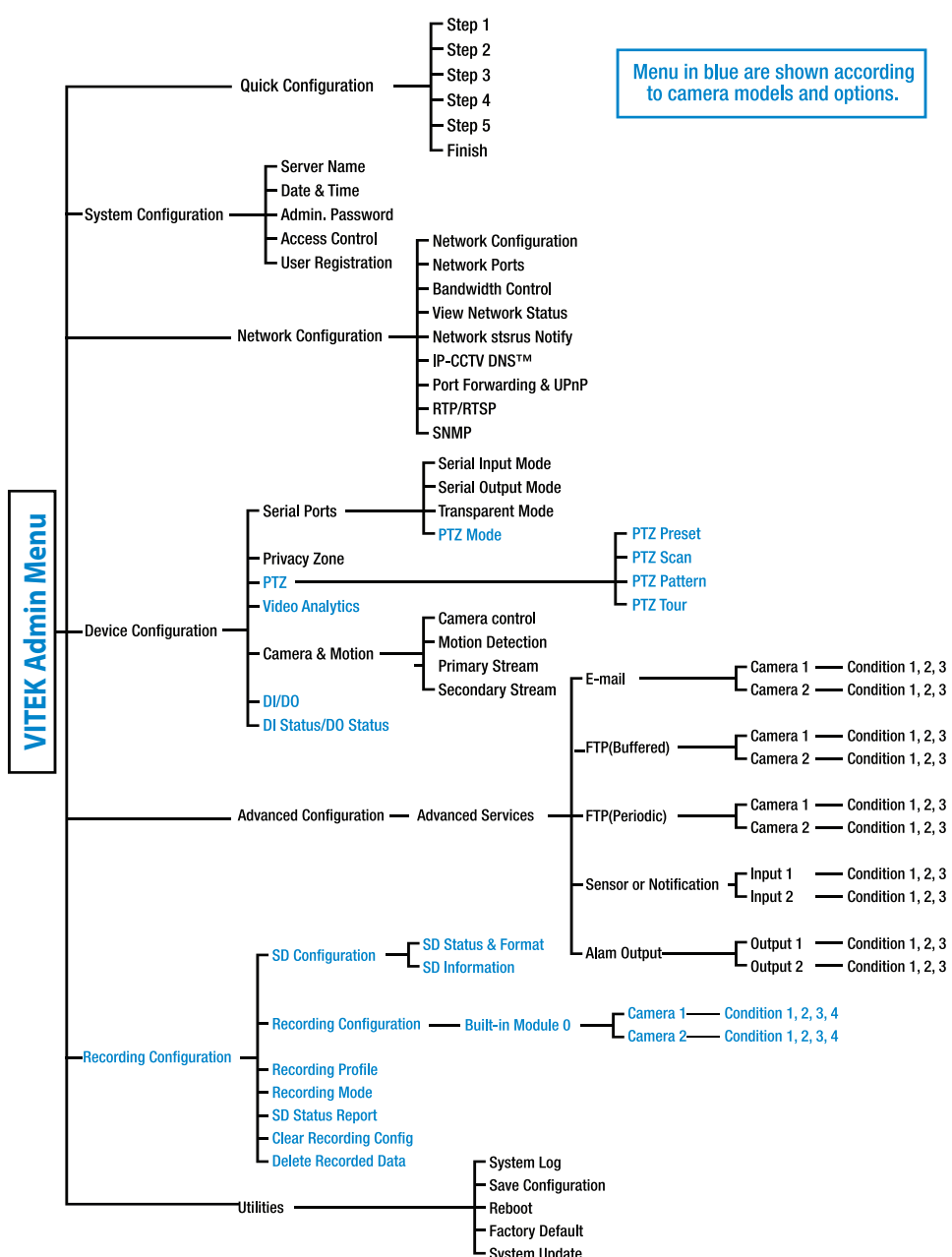
Live view main screen

6

Advanced

- For advanced settings of IP cameras, please refer to **VITEK Web Admin User's manual**.

VITEK Web Admin Menu for Cameras



7

LIMITED LIABILITY WARRANTY

VITEK products carry a three (3) year limited warranty. VITEK warrants to the purchaser that products manufactured by VITEK are free of any rightful claim of infringement or the like, and when used in the manner intended, will be free of defects in materials and workmanship for a period of three (3) years, or as otherwise stated above, from the date of purchase by the end user. This warranty is nontransferable and extends only to the original buyer or end user customer of a VITEK Authorized Reseller.

The product must have been used only for its intended purpose, and not been subjected to damage by misuse, willful or accidental damage, caused by excessive voltage or lightning.

The product must not have been tampered with in any way or the guarantee will be considered null and void.

This guarantee does not affect your statutory rights.

Contact your local VITEK Reseller should servicing become necessary.

VITEK makes no warranty or guarantee whatsoever with respect to products sold or purchased through unauthorized sales channels. Warranty support is available only if product is purchased through a VITEK Authorized Reseller.



8