

Package Includes

1. Box Contents

- 1) VTD-AR2D4FN IP Infrared Dome camera
- 2) Mounting Accessories
- 3) Mini CD

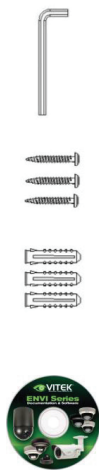
2. Included Accessories

3mm Hex L-wrench  
Qty: 1

Wall mounting screws  
Qty: 3

Anchors  
If necessary, use the anchor to help secure the self tapping screws.  
Qty: 3

Mini CD with Product Documentation  
Qty: 1



2

QUICK START GUIDE



**VTD-AR2D4FN**  
2.4 MegaPixel Dome Camera with  
3.6mm Fixed Iris Lens & 60' IR LEDs



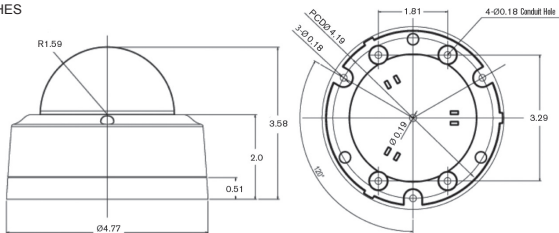
- 1/2.9" Sony® CMOS
- 2.4 MegaPixel With full 1080p/720p Output
- Up to 30fps live view @ 1920x1080 (1080p)
- Built in 3.6mm Megapixel Fixed Iris Lens
- Automatic True Day/Night
- H.264/MJPEG Dual Streaming
- 24 IR LEDs with up to 60' Range
- Micro SD memory card slot for Local recording
- Advanced OSD Functions: Motion Detection & Privacy Masking
- Heavy Duty IP66 rated weather/vandal resistant aluminum construction
- Designed for Ceiling Mount Applications
- 12VDC & PoE (Power over Ethernet) Operation

Specifications & installation procedure subject to change without notice.  
Visit [www.vitekcctv.com](http://www.vitekcctv.com) for the most current information available.



Dimensions

MEASUREMENTS: INCHES



Layout

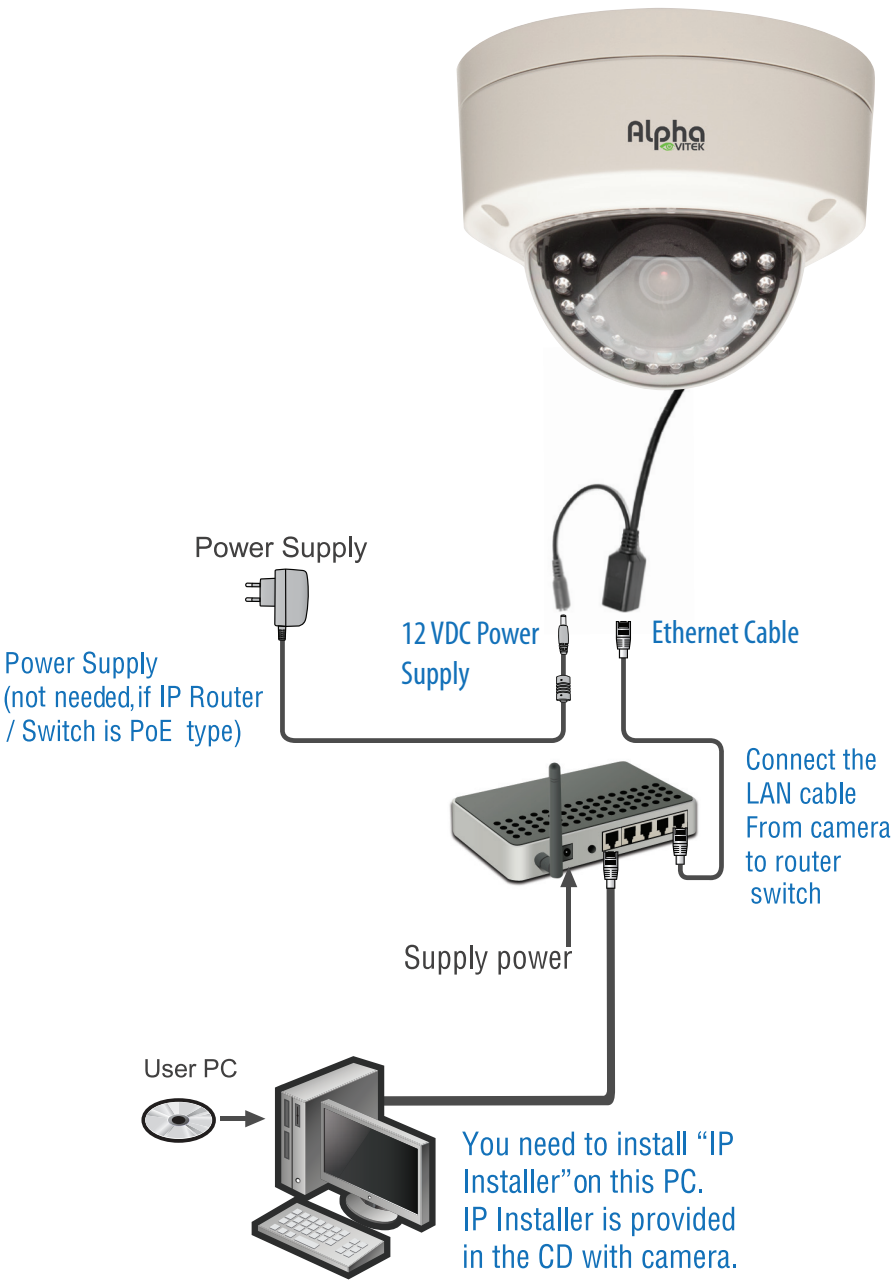
External View



- Ⓐ Dome Base
- Ⓑ Dome Cover
- Ⓒ Dome Polycarbonate Bubble
- Ⓓ IR LEDs
- Ⓔ Lens

- ① 3-Axis Mounting Gimbal
- ② Rubber Gasket
- ③ IP Reset Button
- ④ Lens Release Clamps
- ⑤ Micro SD Card Slot

Connections



3

4

IP Setup

- 1

Execute IP Installer on Desktop.
- 2

Press **Scan button**. IP cameras under the same router will be searched and listed.  
It takes a few seconds. Default IP address is 10.20.30.40
- 3

Select searched product, and press **Auto-IP setting** button.
- 4

Change the Server Name here.
- 5

Check Http port and put **80** . This is an internal port
- 6

IP address: You may use auto-scanned IP **192.168.0.254** as it is or you may set **Static IP** as below..  
**Typical IP setting is as follows.**  
**IP address.: 192.168.0.254(you can change the last column)**  
**Netmask: 255.255.255.0**  
**Gateway: 192.168.0.1**  
DNS1/2: You can copy the PC's network properties.  
This is for Internet environment.
- 7

Input **“root”** here for **password**.

If you see “Do you want to change network information?” click “yes”. Please wait until network information gets changed. If this IP setting is Completed correctly, you will find the changed IP address “success” in the status column.

# Factory Default ID: root  
Password: root

- 8

Do not forget to press **“Set”**.

IP Installer (v3.0.9)

Filter : All

Model	MAC address	IP address	IP Type	Server name	HTTP
FW1175-FX-W	00306fabcdcf	10.20.30.40	static	servername	80

Network Setup

MAC Address

00306F8381A2

Server Name

Network Video System

IP Type

Static

IP Address

192 . 168 . 0 . 254

Netmask

255 . 255 . 255 . 0

Default Gateway

10 . 10 . 1 . 1

DNS1

168 . 126 . 63 . 1

DNS2

168 . 126 . 63 . 2

Wireless Information

Auth Mode

None

Encryption

None

WEP Mode

None

KEY1

KEY2

KEY3

KEY4

WPA/PSK

Authentication

Admin Password

\*\*\*\*

Save Configuration Option

Save Configuration

Not Saving

SET

Cancel

5

Advanced

1

For advanced settings of IP cameras, please refer to **VITEK** Web Admin User’s manual.

Web Admin Menu for Cameras

VITEK Admin Menu

Quick Configuration

Step 1

Step 2

Step 3

Step 4

Step 5

Finish

System Configuration

Server Name

Date & Time

Admin. Password

Access Control

User Registration

Network Configuration

Network Configuration

Network Ports

Bandwidth Control

View Network Status

Network strsus Notify

IP-CCTV DNS™

Port Forwarding & UPnP

RTP/RTSP

SNMP

Device Configuration

Serial Ports

Serial Input Mode

Serial Output Mode

Transparent Mode

PTZ Mode

Privacy Zone

PTZ

Video Analytics

Camera & Motion

Camera control

Motion Detection

Primary Stream

Secondary Stream

DI/DO

DI Status/DO Status

Advanced Configuration

Advanced Services

E-mail

FTP(Buffered)

FTP(Periodic)

Sensor or Notification

Alam Output

Recording Configuration

SD Configuration

SD Status & Format

SD Information

Recording Configuration

Built-in Module 0

Camera 1

Camera 2

Recording Profile

Recording Mode

SD Status Report

Clear Recording Config

Delete Recorded Data

Utilities

System Log

Save Configuration

Reboot

Factory Default

Menu in blue are shown according to camera models and options.

7

Image Viewing under the Same Router

- 1

Please double click the selected product or click “homepage” after select product on the list.

IP Installer (v3.0.9)

Filter : All

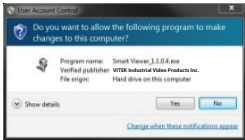
Model	MAC address	IP address	IP Type	Server name	HTTP
FW1175-FX-W	00306fabcdcf	10.20.30.40	static	servername	80



- 2

Please click **“Liveview”** on top right of the screen.

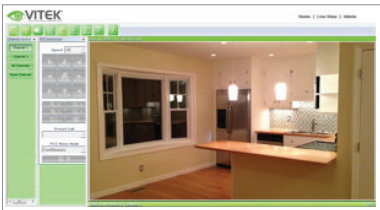
\* If the PC is internet-connected, Active X control should be downloaded as follows, No. 3



- 3

Please click yes for “ActiveX Control

\* If the PC is not internet-connected, you need to install SmartViewer.exe in the CD provided with camera.



Live view main screen

Only after installation of Active X or Smart Viewer, you can view live images.

6

LIMITED LIABILITY WARRANTY

VITEK products carry a three (3) year limited warranty. VITEK warrants to the purchaser that products manufactured by VITEK are free of any rightful claim of infringement or the like, and when used in the manner intended, will be free of defects in materials and workmanship for a period of three (3) years, or as otherwise stated above, from the date of purchase by the end user. This warranty is nontransferable and extends only to the original buyer or end user customer of a VITEK Authorized Reseller.

The product must have been used only for its intended purpose, and not been subjected to damage by misuse, willful or accidental damage, caused by excessive voltage or lightning.

The product must not have been tampered with in any way or the guarantee will be considered null and void.

This guarantee does not affect your statutory rights.

Contact your local VITEK Reseller should servicing become necessary.

VITEK makes no warranty or guarantee whatsoever with respect to products sold or purchased through unauthorized sales channels. Warranty support is available only if product is purchased through a VITEK Authorized Reseller.



8