



CHRONO-X 8 & 16 Channel Real Time D1 Digital Video Recorders

The CHRONO-X 8 and 16 channel DVRs are state-of-the-art Full-Featured Ultra Powerful DVRS with the latest H.264 compression with built-in data redundancy and direct connect Multi-Channel POS. With an HDMI 1920x1080 Resolution output and up to 480fps of recording and playback in full frame D1 resolution, it's easy to see why the Chrono is the choice of the most demanding professionals. The system Setup Wizard and User Friendly GUI make this an easy product to install and users are able to upload and download multiple settings to a thumb drive for ease of future installation. Available with up to 6TB internal storage and shipped complete with IR Remote control and rack mount ears. Included Client/CMS Software and free iPhone, iPad and Android apps enable unlimited remote monitoring options.



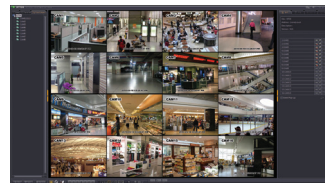
VT-CX840 Rear Connections



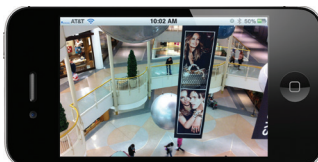
VT-CX1680 Rear Connections



Chrono Series Remote Viewing Apps for iPhone, iPad & Android



Chrono Series CMS Interface



Chrono Series Remote Viewing Apps for iPhone, iPad & Android



Direct Connect Point of Sale Feature (No Interface Needed)

FEATURES:

- Highly efficient H.264 compression
- Built-in Data Redundancy
- Real-time D1 recording and playback
- HDMI Output with 1920 x 1080 Resolution
- Remote Control of additional Chrono-X DVRs locally without the use of a remote PC
- System Setup Wizard and User Friendly GUI
- Multi-Resolution recording
- 4 Selectable Spot Outputs with Sequence and event Pop-up
- Built-in Point-of-Sales support for multiple registers or ATMs
- Web Client & CMS (Central Management Software) Included
- Free iPhone and Android Apps
- Built-in DVD-RW
- Two Way Audio with Individual Audio Input for each Video Input



| Detailed Specifications | VT-CX840 | VT-CX1680 |
|-------------------------|--|---------------------------------------|
| Video | | |
| Video Input | 8 Channels, BNC | 16 Channels, BNC |
| Video Output | HDMI or 1VGA, & 1 BNC Main, 4 Spot Output | |
| Audio | | |
| Audio Input | 8 Line In (RCA) | 16 Line In (RCA) |
| Audio Output | 1 HDMI or 1 RCA (Line Out) | |
| Device | | |
| Sensor In | 8 TTL (7 + Emergency) | 16 TTL (15 + Emergency) |
| Alarm Out | 4 Relay + 4 TTL | 4 Relay + 12 TTL |
| I/O Interface | RS232, RS485, USB2.0 x 2 | |
| Display | | |
| Speed | Real Time | |
| Resolution | 720 x 480 (NTSC), 720 x 576 (PAL), 1280 x 1024 (VGA) 1920x 1080 (HDMI) | |
| Split Screen | 1, 4, 6, 9, PIP, Digital Zoom | 1, 4, 6, 9, 13, 16, PIP, Digital Zoom |
| Recording | | |
| Compression | H.264 Codec | |
| Speed/Resolution | 240fps@D1(NTSC)/ 200fps@D1(PAL) | 480fps@D1(NTSC)/ 400fps@D1(PAL) |
| Picture Quality | Very High, High, Standard, Low | |
| Mode | Time-lapse, Event, Time & Event, Emergency (Panic) | |
| Playback | | |
| Display | 1, 4, 6, 9, Digital Zoom | 1, 4, 6, 9, 13, 16, Digital Zoom |
| Search Mode | Calendar Search, Event Search, Text-In Search, Go to Time | |
| Playback Mode | Multi Channel Normal & Reverse Play, RW & FF (x2, x4, x8, x16, x32), Frame to Frame, Pause | |
| Network | | |
| Interface | Ethernet (10/100/1000 Base) | |
| Protocol | TCP/IP, HTTP, DHCP, ADSL (PPPoE) | |
| Application | Live, Playback, Setup, Notification, (Callback, E-Mail) | |
| Web Browse | Internet Explorer 7 or higher | |
| Mobile Support | iPhone, Android Phone (Real Streaming) | |

| | VT-CX840 | VT-CX1680 |
|-----------------------|---|-----------|
| Storage | 3xSATA HDD & 1xSATA ODD (or max. 4 SATA HDD w/out ODD), E-SATA (max 4 SATA) | |
| Backup | CD & DVD-RW, External HDD (USB), External USB Memory | |
| Control | Front Panel Button, USB Mouse, IR Remote Controller, Joystick Controller | |
| OSD | Graphic User Interface (Multilingual) | |
| Approval | FCC, CE, KCC | |
| ROHS | ROHS Compliance | |
| Power Consumption | DC12V, 9A (108W) | |
| Operating Temperature | 5°C ~ 40°C / 41°F ~ 104°F | |
| Operating Humidity | 0% ~ 80% / non-condensing | |
| Dimension | 430(W)x92.5(H)x428(D)mm / 16.9(W)x3.64(H)x16.8(D)inch | |
| Weight | 5.38Kg / 11.86lb (without HDD, ODD) | |

