

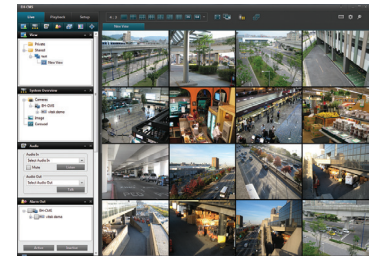
Remote Viewing from anywhere over the Internet using Microsoft Internet Explorer



Remote Viewing Apps Available for both the iPhone, iPad & Android Devices



View backups on PC computers using included Backup Player Software



Included CMS Software allows remote viewing & control of multiple DVR's even when located at multiple locations!

FEATURES

- 8 or 16 Video Inputs with Main, 4 Spot, and 1080P HDMI outputs
- H.264 Compression
- 4 Alarm Inputs / 1 Relay Out
- Up to 480fps Live Display & 480fps Recording (VT-EHP16) / 240/240 (VT-EHP8)
- Built-in Point-of-Sales support
- Built-in Data Redundancy
- Remote Viewing over a LAN or Internet
- Free Applications for iPhone, iPad, iTouch and Droid Devices
- 500GB to 8TB Internal Storage Options (up to 8TB @ 4x2TB)
- Email Event Notification with Snapshot
- CMS Central Management Software (Included)
- MAC Client Software (Included)
- Control locally via Front Panel, USB Mouse or with the Included IR Remote control
- PTZ Control over RS-485

The highest recorded resolution in a Real Time Analog DVR, the EHP delivers "D1" – 704 x 480 @ 480pps maximum frames per second. All of the powerful features and applications of the EH Family can be found in the EHP plus a built in DVD/RW, Jog Shuttle for ease of playback, Individual video loop through, individual alarm inputs & outputs as well as Point-of-Sale (POS) integration and search functions. Available configurations of 8 and 16 channels with a maximum 8 Terabytes internal storage and HDD Mirror redundancy place this DVR at the pinnacle of the VITEK EH Lineup.



VT-EHP8 Rear Connections



VT-EHP16 Rear Connections



Easy setup with the included Quick Installation Guide & Software DVD

Detailed Specifications	VT-EHP8	VT-EHP16
Video Input	8 Channels	16 Channels
Video Compression	H.264 Codec	
IPS (Display / Recording)	240 / 240	480 / 480
Operating System	Linux	
Operation Mode	Pentaplex	
Video Output	HDMI - 1 1080P (1920 x 1080)	
BNC Output	Monitor: 1 Composite (BNC) / Spot: 4 Composite (BNC)	
Spit-Screen	Live: 1,4,6,8,9, SEQ / Playback: 1, 4, 9	Live: 1,4,6,8,9, 16, SEQ / Playback: 1, 4, 9, 16
Audio In/Out	4 Line In (RCA) / 1 Line Out (RCA), CODEC : G.711 (64Kbps)	
Storage	Up to 4 Internal HDD (SATA) + Internal DVD-RW	
Archive	CD/DVD-RW / USB Device / Network	
USB Port	2 Front + 1 Rear	
System Control	Front Panel, USB Mouse, Included IR Remote Control	
Network	TCP/IP, HTTP, DHCP (DDNS)	
RJ-45 Ethernet Port	10M/100M/1Gbps	
Search	Calendar, Event	
Playback Rate	240 fps @ 704x480	480 fps @ 704x480
PTZ	2 - RS-485 - Supports most of PTZ protocols with up to 255 Presets	
Point of Sale (POS)	YES	
Motion Area Setting	Adjustable Grid (16 x 12)	
Recording Resolution Setting	By each camera for different resolution setting(CIF/2CIF/D1)	
Recording Quality Control	4 Levels (Low/Standard/High/Highest)	
Recording Schedule	By hour, by day, by recording mode, By alarm, By Ch	
Panic Record	Overrides all other recording settings to provide the best quality recording	
Pre-recording	Max. 5 seconds	
Post-recording	Max. 180 seconds	
Player	Backup player, Window Media Player and HDD PC Viewer	
E-mail notification	E-mails to specific users to notify events	
System Configuration	Full setup configuration over network	
Bandwidth limit	YES: Adjustable by User	
Two-Way Audio	YES	
Power	12V Adaptor, 3.3A, 100 ~ 220VAC, 50 ~ 60Hz	
Operating Temperature	32° ~ 104°F (0° ~ 40°C)	
Humidity	10 ~ 90% NC	
Case Form Factor	2U	
Dimensions	17" x 4" x 18"	

