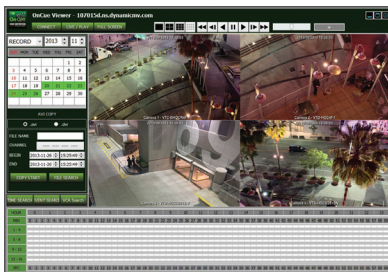




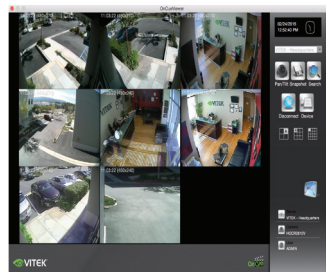
HD-SDI or High Definition Serial Digital Interface is a technology adopted from the broadcast industry. The format SMPTE 292M has now been adopted across the Closed Circuit Video Industry and is brought to you by VITEK in an Economical and feature abundant way.

FEATURES

- 4 CH EX-SDI / Analog Inputs (hybrid) with Full 1080p Camera Support
- Now Supporting Cable distance of up to 1000' using RG59!*
- Hybrid Operation over COAX for HD-SDI, 960H, and D1 Cameras
- Simple plug and play, point-to-point connection from camera to DVR
- Real Time Recording on all channels at 1080p (480fps)
- HDMI, VGA, and Spot BNC Outputs
- 2 Internal SATA2/SATA3 HDD Slots supporting up to 8TB (2 x 4TB HDD) using Advanced HDD Format
- External SATA Port (eSATA) Supporting up to 5x External via eSATA
- Alarm In/Out
- Per channel Image Adjustment
- 4 Channel Audio In
- 32 x 24 Motion Detection Grid
- Multi channel Spot output
- Remote Viewing via CMS Software, Internet Explorer, and Mobile Phones (iOS/Android)
- Panorama (Thumbnail) Search
- Linear digital zoom for live and playback
- Up to 7 Simultaneous Network/Remote Connections
- 64 Camera Remote Viewing via CMS Software
- RS485 Communication port



Local Management, Viewing Interface & Remote Viewing with Internet Explorer



Remote Viewing Using Mac OS X



Apps Available for iPhone, iPad, & Android Devices



Rear Connections

HDMI™
HIGH-DEFINITION MULTIMEDIA INTERFACE



* Extended cable distance can only be achieved by using EX-SDI Camera in conjunction with On cue EX SDI DVR or optional VLC "EX" Dongle.

Detailed Specifications

Video Input / Resolution	4 CH EX-SDI Inputs / Analog Inputs (hybrid)
Main Monitor Output	1 HDMI / 1 VGA (up to 1920x1080)
Spot Output	1 BNC
Audio In/Out	4 line in (RCA) / 1 line out (RCA) & HDMI Audio Output
Alarm In/Out	4 In / 1 Out (Relay)
Recording Compression	H.264
Recording Multi Operation	Pentaplex (Live, Playback, Recording, Backup, Network)
Recording (720p)	120fps: 30fps per channel @ 1280x720 / 1280x360 / 640x360
Recording (1080p)	120fps: 30fps per channel @ 1920x1080 / 1920x540 / 960x540
Playback	Up to 120fps
Live Display Speed (Max)	720p / 1080p @ 120fps
Network Streaming	20fps @ 1080p / 30fps @ 1920x540 / 60fps @ 960x540 / 60fps @ 960x270 / 120fps @ 480x270
Simultaneous Network Connections	Up to 7
Recording Mode	Continuous, Event (Motion, Alarm), Schedule
Motion Detection / Privacy Masking	32 x 24 Grid
Storage Interface	SATA2 / SATA3 (Supports Advanced HDD Formatting)
SATA HDD Inputs	2 SATA HDD Max. & Up to 5x External via eSATA
eSATA	Built in
Max Supported HDD Size	Up to 4TB each using Advanced Format (Up to 8TB Internal Storage)
Data Redundancy (Mirroring / Event)	Dual Recording Mode (Individually Selectable per Camera)
External Backup	AVI / DVR Format to USB Device (HDD, Thumb Drive, etc.) & Network
System Control	Front Key Buttons / USB Mouse, IR Remote Controller
Network	LAN (TCP/IP Ethernet, RJ45), DHCP, Dynamic IP, DDNS, uPNP, HTTP, NTP
Ethernet Port	10MB / 100MB / 1GB
Hybrid Camera Operation	Built in
Remote Viewing Software	CMS / Web Browser / Mobile (iOS/Android)
Adjustable Access Levels Per User	Search & Play / Archiving / DVR Setup / PTZ Control / Power Off
Digital Zoom	Linear scale for Live & Playback
Image adjustment	Brightness, Contrast, Hue, Saturation
Panorama (Thumbnail) Search	YES
PTZ Tour Event Preset	YES
Sensor Triggered PTZ activation	YES
Motion Sensor Display	YES
DDNS	YES
Email Notification	YES
Power	12VDC / 3A
Operating Temperature	41 ~ 104 °F (5 ~ 40 °C) / 20 ~ 80% RH
Dimensions (W x H x D)	13.31" x 2.43" x 9.75" (338 x 62 x 248mm)
Weight	5.73 lbs. (2.6 Kg)

