



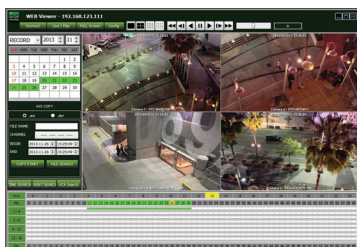
OnCue IP "S" NVR Series

VT-NV "S" Series Stand-alone Real-time IP Network Video Recorders with Real Time Recording on all channels at 1080P and shares the same local and remote software platform as our award winning On Cue HD-SDI recorders. The Advanced On Cue Central Monitoring software (CMS) is capable of connecting multiple On Cue NVRs and HD-SDI/EX-SDI recorders. Up to 3 Internal SATA2 HDD Slots support up to 12TB (3 x 4TB HDD) using Advanced HDD Format plus optional eSATA for storage expansion (up to 5 more HDD).

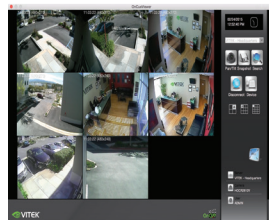
VT-NV "S" Series: 4, 8, and 16 Channel Real Time 1080P Network Video Recorders

Features:

- 4, 8 or 16 Channel Stand-alone Real-time IP Network Video Recorders
- Full HD (1080p) Real-time recording with 120fps live display & playback
- Panorama (Thumbnail) Search
- HDMI, VGA, and BNC Outputs
- H.264 & MPEG4 Dual Streaming Compression Method
- Plug and Play & Auto configuration for ONVIF compliant and many leading IP Camera models
- P2P (Peer to Peer) camera connection supported by internal Hub
- Auto Port Forwarding supported by uPnP
- Health monitoring: Temperature, Fan speed, HDD S.M.A.R.T
- Alarm In/Out
- Per channel Image Adjustment
- Internal 4-Port PoE Switch
- 1 Gigabit LAN Port / 1 Gigabit WAN Port
- Video Analytics with Search Feature (Camera dependent)
- Linear Digital zoom / Automatic sequencing / Freezing
- Quadplex (Live / Record / playback / network)
- Remote Viewing via CMS Software, Internet Explorer, and Mobile Phones (iOS/Android)
- Web-based remote configuration
- Supports up to 12GB Internal Storage (3x4TB - VT-NV800S/VT-NV1600S) / 8GB Internal Storage (2x4TB - VT-NV400S)
- eSATA for storage extension of up to 5 more HDD (VT-NV800S/VT-NV1600S)
- RS485 Communication port
- Bidirectional Audio Support
- Dual Recording mode for data integrity



Remote Viewing from Anywhere Using Internet Explorer



Remote Viewing using Mac OS X



Remote Viewing Apps for iPhone, iPad & Android



Detailed Specification	VT-NV400S	VT-NV800S	VT-NV1600S
Channels	4 CH	8 CH	16 CH
Max Recording Rate	120fps@1080p	240fps@1080p	480fps@1080p
Max.Bitrate (Per Camera)	5Mbps (720p) / 4Mbps (1080p) @ 30fps	8Mbps (720/1080p) @ 30fps	6Mbps (720/1080p) @ 30fps
IP Camera Support	Vitek / Samsung / UDP / CNB / Comart / Truen / Shany / SecuBest / OnViF		
Video Output	120 fps @ 1080p	120 fps @ 1080p	120 fps @ 1080p
Display Mode (Channels)	1 / 4	1 / 4 / 9	1 / 4 / 9 / 16
CVBS (BNC) Outputs	MAIN w/o GUI		
Video Compression	H.264 Baseline/Main/High Profile, MPEG4		
Audio Recording	1 Per Camera Using audio streams from camera		
Audio (External)	Using audio streams from camera (G.711, ADPCM, PCM)		
Local Audio Inputs	1CH Line-in		
Search Mode	Time / Calendar / Panorama / Event / VCA Metadata		
Panorama Search	Support with 16 split view window		
WAN Port	1 x 10/100	1 x G-NET	1 x G-NET
LAN Port	1 x G-Net	1 x G-Net	1 x G-Net
P2P Port (PoE Hub)	4 x 10/100		
Live Streaming	1st or 2nd stream selectable		
Remote Viewing	RMS for Windows, Web Viewer(ActiveX), iOS Viewer, Android Viewer		
No of HDDs	3 (SATA-II)		
Max HDD Size	2 (SATA-II)	4TB	3 (SATA-II)
RAID Mode	Dual Recording		
e-SATA	1		
Media Type	N/A	USB Memory or USB HDD	1
Copy Format	AVI		
Backup	DVR format (with the embedded file player)		
Video Loss	Connection Lost Detection		
Alarm In/Out	4 In / 1 Out (Relay)		
Motion Detection	Indicated from Camera		
VCA/Meta data	Camera dependent		
GUI Control	IR Remote Control / USB Mouse		
Health Checking	HDD S.M.A.R.T/ Fan Speed / Watchdog / Record Integrity		
Serial Com.	RS-485 for PTZ and Controller		
Language	Multi-Language (English/Russian/German/Korean/Japanese/Chinese/Polish/Etc.)		
System	DC 12V/3A		
PoE Power	72W(DC 48V/1.5A)		
WxDxH (mm)	14.57" x 10.04" x 2.36 (370 x 302 x 60mm)		
Operation Temp.	32° ~ 104°F (0° ~ 40°C) / 10 ~ 90% RH		

VT-NV400S SERIES CONFIGURATION

VT-NV400S/1T	4ch NVR 1080P Real Time 1 Terabyte Drive w/4chPoE, E-Sata, (2HDDs Max)
VT-NV400S/2T	4ch NVR 1080P Real Time 2 Terabyte Drive w/4chPoE, E-Sata, (2HDDs Max)
VT-NV400S/4T	4ch NVR 1080P Real Time 4 Terabyte Drive w/4chPoE, E-Sata, (2HDDs Max)
VT-NV400S/6T	4ch NVR 1080P Real Time 6 Terabyte Drive w/4chPoE, E-Sata, (2HDDs Max)
VT-NV400S/8T	4ch NVR 1080P Real Time 8 Terabyte Drive w/4chPoE, E-Sata, (2HDDs Max)

VT-NV800S SERIES CONFIGURATION

VT-NV800S/1T	8ch NVR 1080P Real Time 1 Terabyte Drive w/4ch PoE, E-Sata, (3HDDs Max)
VT-NV800S/2T	8ch NVR 1080P Real Time 2 Terabyte Drive w/4ch PoE, E-Sata, (3HDDs Max)
VT-NV800S/4T	8ch NVR 1080P Real Time 4 Terabyte Drive w/4ch PoE, E-Sata, (3HDDs Max)
VT-NV800S/6T	8ch NVR 1080P Real Time 6 Terabyte Drive w/4ch PoE, E-Sata, (3HDDs Max)
VT-NV800S/8T	8ch NVR 1080P Real Time 8 Terabyte Drive w/4ch PoE, E-Sata, (3HDDs Max)
VT-NV800S/12T	8ch NVR 1080P Real Time 12 Terabyte Drive w/4ch PoE, E-Sata, (3HDDs Max)

VT-NV1600S SERIES CONFIGURATION

VT-NV1600S/1T	16ch NVR 1080P Real Time 1 Terabyte Drive w/4ch PoE, E-Sata, (3HDDs Max)
VT-NV1600S/2T	16ch NVR 1080P Real Time 2 Terabyte Drive w/4ch PoE, E-Sata, (3HDDs Max)
VT-NV1600S/4T	16ch NVR 1080P Real Time 4 Terabyte Drive w/4ch PoE, E-Sata, (3HDDs Max)
VT-NV1600S/6T	16ch NVR 1080P Real Time 6 Terabyte Drive w/4ch PoE, E-Sata, (3HDDs Max)
VT-NV1600S/8T	16ch NVR 1080P Real Time 8 Terabyte Drive w/4ch PoE, E-Sata, (3HDDs Max)
VT-NV1600S/12T	16ch NVR 1080P Real Time 12 Terabyte Drive w/4ch PoE, E-Sata, (3HDDs Max)



Rear Connections