

# VT-PTZ220NP

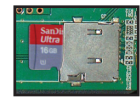
ENVI Series 2.0 MegaPixel 20x IP PTZ Camera with Integrated PoE Plus

**ENVI**  
ENHANCED NETWORK  
VIDEO INTEGRATION



**FEATURES:**

- 1/2.8" 2.0 MegaPixel Sony® Exmor™ Progressive Scan CMOS Sensor
- Up to 30fps live view @ 1920 x 1080p
- High speed PTZ operation from 0.1°/sec to 420°/sec.
- XDNR Noise Reduction (Utilizes both 2DNR & 3DNR)
- 16:9 Video format
- True Day/Night with ICR & DSS
- H.264/MJPEG Dual Streaming
- Full duplex 2 way audio, Alarm IN/OUT
- Minimal Latency w/Max 16 User Connections
- Onvif Compliance
- MicroSD Card Slot supporting up to 64GB cards for Onboard EDGE Recording & Playback
- 12VDC & PoE Plus (Power over Ethernet)
- 3 Year Warranty



MicroSD Card Slot for Onboard EDGE Recording & Playback

**IPcctv**  
MegaPixel CCTV Over IP Networks



The VT-PTZ220N offers a 2.0 MegaPixel IP based high speed network PTZ camera solution which delivers real time live video up to 30fps @ 1920x1080p over a TCP/IP network. Crystal clear images are achieved without tearing using a progressive scan CMOS image sensor. Minimal network bandwidth usage and storage space is achieved using the most advanced H.264 Video Compression algorithm. Motion JPEG is also supported for maximum flexibility and integration possibilities. All ENVI cameras also offer **EDGE Recording** with onboard SD or MicroSD card slots for on camera backup with remote access & playback.

**NUMEROUS HOUSING AND MOUNT OPTIONS TO CHOOSE FROM:**

**VT-PTODKIT/IP**  
PTZ Outdoor Kit w/ Heater/Blower, Sun Shield, and 24-12V Converter



**VT-PTWMT**  
PTZ Wall Mount



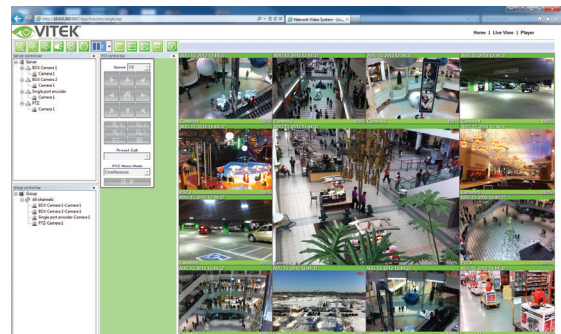
**VT-PTIBMT**  
PTZ I-Beam Mount



**VT-PTHSG/IP**  
PTZ Housing w/ Clear or Smoked Bubble



**VT-PTFMK**  
PTZ Flush Mount Kit w/ Clear or Smoked Bubble



Web based interface.



**VT-PTPPMT**  
PTZ Parapet Mount



**VT-PTPDMT**  
PTZ Pedestal / Ceiling Mount



**VT-PTCNMT**  
PTZ Corner Mount Adapter



**VT-PTPLMT**  
PTZ Pole Mount Adapter



**ENVI Mobile App**  
ENVI Remote Viewing App for iPad/ iPhone & Android Devices



(888) VITEK-70 | WWW.VITEKCCTV.COM  
28492 Constellation Road Valencia, CA 91355

An Eye On Innovation

## Detailed Specifications

Image Sensor	1/2.8" 2.0 Megapixel Sony® Exmor™ Progressive Scan CMOS Sensor
Resolution	1920x1080 (2MP-1080p) / 1280x720 (1MP-720p) / 640x352 (VGA) / 320x176 (CIF) / 160x96 (QCIF)
Minimum Illumination	0.5 lux @ 1/30s / 0.095 lux @ 1/30s w/IR Cut Filter Removed. (High Sensitivity mode ON)
Lens	4.7mm to 94.0mm @ F1.6 to F3.5
View angle	Approx. 55.4 (WIDE end) to 2.9 (TELE end)
Optical Zoom	20x
Digital Zoom	12x
S/N ratio	More than 50dB
Day/Night Operation	True Day/Night with ICR
DSS (Digital Slow Shutter)	YES
Pan Angle	360° Continuous
Manual Pan Speed/sec	0.1~100°/sec (Proportional to Zoom) / 420°/sec Preset
Autoscan	16 Autoscan
Communication	1 serial ports (COM: RS-232)
Preset	32 Preset Positions
Zone Title	24 Area Names
Privacy Zone	8 Privacy Zones
Tour	8 Tour
Pattern	8 Patterns (up to 480° second)
Auto Pan	1 Auto Pan
Flip	YES
Video Encoding Mode	H.264/MJPEG(simultaneous dual stream) /H.264/H.264 (true H.264 dual streaming) Simultaneous streaming with independent control
Live Casting	Streaming video channels with full duplex live audio. Up to max 30fps@ D1 when simplex
UART support	Console, By-pass command to control UART device, X10 device, Modem Support (ISDN, PSTN and GSM)
Bandwidth Management	Frame rate control / Bandwidth control / CBR / VBR
Security	Channel based user password protection for live-cast, PTZ, alarm output and audio
Dynamic IP Support	YES
Management Software	Supports 16, 32, 64, 128 Channel EN-V-I Software
Protocol & Interface	Protocols: HTTP, RTP/RTSP, Multicast, TCP/IP, ARP, ICMP, Telnet, Ftp, PPPoE, SMTP, DHCP, NTP, uPNP, and etc.
Software (Web interface)	Live-cast, PTZ control, search through Web browser
MicroSD Card Support	Up to 64GB
System hardware	32bit RISC CPU / Embedded Linux / 128MB SDRAM / 128MB Flash
Ethernet	10/100-Base-T Ethernet (auto-sensing)
Alarm (Input/Output)	1 digital input (NC/NO selectable) / 1 relay output
Audio (Input/Output)	1 audio input / 1 audio output: 8 bit PCM (G.711-u-low), Sampling rates 8KHz, Mono Audio
Power Over Ethernet (PoE)	PoE Plus (IEEE 802.3at)
Power Source	12VDC / PoE Plus
Power Consumption (12VDC)	1.5amps
Power Consumption (PoE)	16W
Approvals	FCC (Class A) / CE (Class A)
Working Environment	32° ~ 122°F (0° ~ 50°C) / 20 ~ 80% RH
Dimensions (Dia. x H)	5.65" x 8.12" (143.5 x 206.3mm)
Weight	3.75 lbs. (1.7kg)