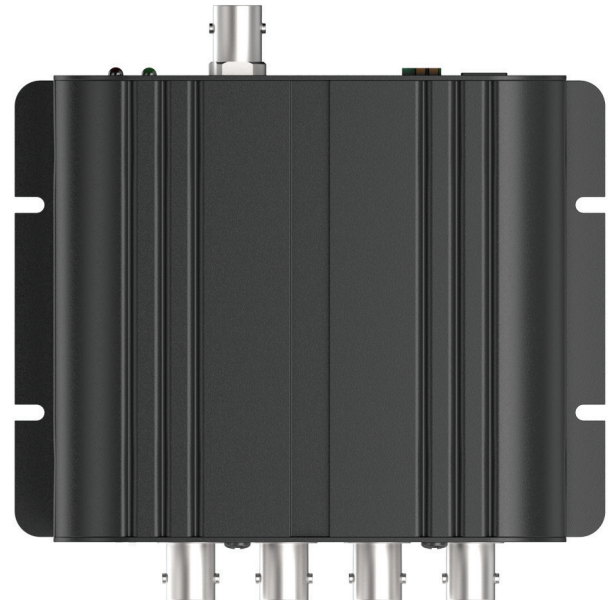




The VT-QHD4 is a 4 Channel Analog interface that allows up to 4 Analog cameras to be added in quadrants per HD channel to an On Cue High Definition security system. The perfect way to infuse additional channels into your system without having to purchase an additional or higher capacity DVR.

### FEATURES

- 960H Quad Splitter
- 4 Inputs: 960H, 720H or SD per Input
- 2 Outputs: 1 HDMI and 1 HD-SDI
- Output: HDMI : Only 1080p 60  
HD-SDI: 1080p 60 & 30
- 75Ω Impedance Input & Output (Error Range:  $\pm 1\%$ )
- Repower is required after adjusting the dip switch (NTSC/PAL & HDMI/HD-SDI)



### Detailed Specifications

|                  |  |
|------------------|--|
| SYSTEM           | 960H Quad Splitter   |
| VIDEO SYSTEM     | NTSC, PAL  |
| VIDEO INPUT      | 4 BNC  |
| INPUT FORMAT     | SDTV (960 × 480 / 576)                                     |
| VIDEO OUTPUT     | 1 HDMI Output (HDMI v1.3) and 1 HD-SDI Output (SMPTE 292M) |
| VIDEO MODE       | 4 Channel layout   |
| OUTPUT FORMAT    | HDMI 1080p 60 or HD-SDI 1080p 30                           |
| POWER INPUT      | Free Voltage 12VDC, 1A                                     |
| HDMI CONNECTOR   | HDMI Female  |
| RS485 CONNECTOR  | RS485 – Terminal Block                                     |
| HD-SDI CONNECTOR | BNC Female   |
| DIMENSION        | 4.49" x 3.53" x 1.36" (114mm x 89.6mm x 34.5mm)            |



| #  | Function              | Description  |
|----|-----------------------|--|
| 1  | NTSC or PAL SELECT    | Select NTSC or PAL mode                            |
| 2  | HDMI or HD-SDI SELECT | Select HDMI or HD-SDI                              |
| 3  | 960H INPUT 1          | 960H or SD Camera Input (1ch)                      |
| 4  | 960H INPUT 2          | 960H or SD Camera Input (2ch)                      |
| 5  | 960H INPUT 3          | 960H or SD Camera Input (3ch)                      |
| 6  | 960H INPUT 4          | 960H or SD Camera Input (4ch)                      |
| 7  | DC-IN POWER           | DC 12V, 1A Adaptor                                 |
| 8  | RS-485 IN & OUT       | RS-485 Terminal Block (Reserved)                   |
| 9  | HDMI OUT              | HDMI Output Connection                             |
| 10 | HD-SDI OUT            | HD-SDI Output Connection                           |
| 11 | ACTIVE LED            | Green LEDs signal which video signal inputs are ON |
| 12 | POWER LED             | Red LED signals Power ON/OFF                       |