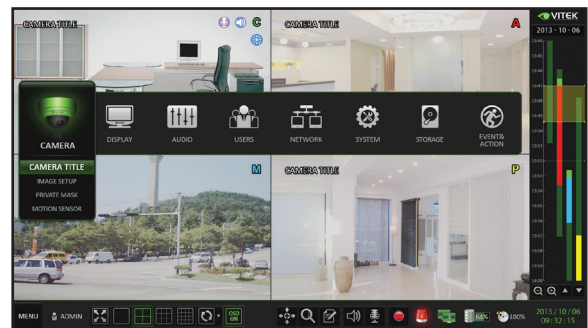


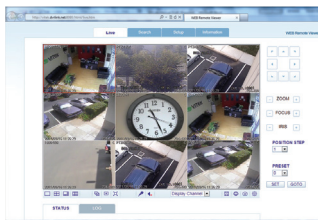


FEATURES

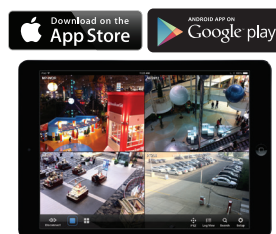
- Supports High Resolution HD-TVI, AHD, and 960H Cameras
- 4 or 8 Video Inputs with 1 HDMI, 1 Spot Monitor Output (VT-SHE904) / 1 HDMI, 2 Spot Monitor Output (VT-SHE908) and 1 VGA output
- H.264 Compression
- Realtime with up to 240fps Live Display & 240fps Recording (VT-SHE908) / 120/120 (VT-SHE904)
- Supports both Dynamic and Static IP Addresses
- 6 Alarm Inputs (4 + 1 Panic & 1 Reset) with 2 Relays
- Remote Viewing over the Internet via Web Browser or LAN
- Up to Four internal 6TB HDD for up to 24TB of internal Storage (VT-SHE908) / 2 internal HDD (VT-SHE904)
- Supports 6TB Hard Drives
- Applications for iPhone, iPad, iTouch and Android Devices
- "Quick Search" Function for automatic review
- Dual Gigabit Ethernet Ports (1 LAN + 1 WAN)
- Mac OSX Client & CMS Central Management Software Included
- Automatic sending of Health & Event notifications via email
- Control locally via Front Panel Controls, USB Mouse or with the Included IR Remote control
- PTZ Control over RS-485
- Rack Mountable (Optional VT-SHE-RK Rack Kit)



Intuitive configuration menu.



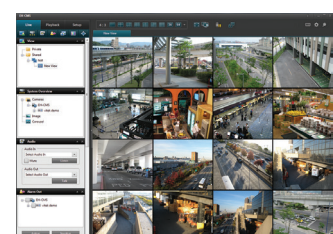
Remote Viewing over the Internet, LAN, Explorer, Safari, Firefox, Opera and Chrome



Remote Viewing Apps Available for iPhone, iPad & Android Devices



View backups on PC computers using included Backup Player Software



Included CMS Software allows remote viewing & control of multiple DVR's even when located at multiple locations!

Detailed Specifications	VT-SHE904	VT-SHE908
Video Inputs	4 Channels (TVI / AHD / 960H)	8 Channels (TVI / AHD / 960H)
Video Compression	H.264	
FPS (Display, Recording, and Playback)	120 / 120 @ 1080P / 720P / 960H / D1 / 2CIF / CIF	240 / 240 @ 1080P / 720P / 960H / D1 / 2CIF / CIF
Operating System		
Video Output	VGA / HDMI / 1x Spot BNC	VGA / HDMI / 2x Spot BNC
Dual Monitor Support	YES	
Split-Screen	Live: 1, 4, SEQ / Playback: 1, 4	Live: 1,4,6,8,9, SEQ / Playback: 1, 4, 9
Audio In/Out	4 Line In (RCA) / 1 Line Out (RCA)	
Alarm In/Out	6 Alarm Inputs (4 +1 Panic & 1 Reset) with 2 Relays	
Internal Storage	2 Internal HDD (SATA)	4 Internal HDD (SATA)
External Storage	eSATA / NAS (Backup to FTP Server)	
Archive	USB Device & Network	
USB Port	3 Ports (2 Front + 1 Rear)	
System Control	Front Panel, USB Mouse, Included IR Remote Control	
Network	TCP/IP, HTTP, DHCP (DDNS)	
RJ-45 Ethernet Port	Dual: 1 (LAN) + 1 (WAN) - 10/100/1000Mbps	
Auto Port Forwarding	YES	
Search	Calendar, Time, Panorama (thumbnail), Event	
PTZ	1-RS485 & 1-RS232	
Recording Resolution Setting	Individual resolution settings for each camera (CIF, 2CIF, D1, 960H, 720p, 1080P)	
Recording Quality Control	5 Levels (Lowest/Low/Standard/High/Highest)	
Recording Modes	By hour, by day, by recording mode, By alarm, By Ch	
Panic Record	Overrides all other recording settings to provide the best quality recording	
Pre-recording	Max. 5 seconds	
Post-recording	Max. 180 seconds	
Motion Detection	Adjustable 20x12 Grid with 10 Steps Sensitivity Level	
Player	Backup player, and HDD PC Viewer	
Remote Viewing	YES (Windows®, Linux, Mac OSX®)	
E-mail notification	E-mails to specific users to notify events	
System Configuration	Full setup configuration over network	
Bandwidth limit	YES: Adjustable by User	
Two-Way Audio	YES	
Power	12V Adaptor, 5A, 100~240VAC, 50~60Hz	12V 4Pin Adaptor, 6.67A, 100~240VAC, 50~60Hz
Power Consumption	16W max. without HDD	30W max. without HDD
Operating Temperature	32° ~ 104°F (0° ~ 40°C)	
Humidity	10 ~ 90% NC	
Case Form Factor	1.5U	
Dimensions (W x H x D)	14.5" x 14.5" x 2.75"	
Weight (w/o HDD)	8.0 lbs (3.6kg)	