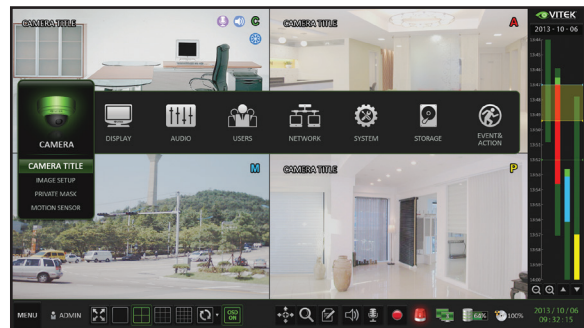




FEATURES

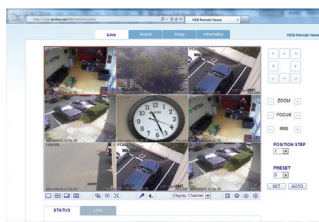
- Supports High Resolution HD-TVI, AHD, and 960H Cameras
- 16 Video Inputs with 1 HDMI, 2 Spot Monitor, & 1 VGA Outputs
- H.264 Compression
- Realtime with up to 480fps Live Display & 480fps Recording
- Supports both Dynamic and Static IP Addresses
- 16 Audio In / 2 Audio Out
- 18 Alarm Inputs (16 +1 Panic & 1 Reset) 8 Outputs with 8 Relays
- Remote Viewing over the Internet via Web Browser or LAN
- Up to Five internal 6TB HDD for up to 30TB of internal Storage
- 6TB Hard Drive Support
- Applications for iPhone, iPad, iTouch and Android Devices
- "Quick Search" Function for automatic review
- Mac OS X Client & CMS Central Management Software Included
- Automatic sending of Health & Event notifications via email
- Control locally via Front Panel Controls, USB Mouse or with the Included IR Remote control
- PTZ Control over RS-485
- Rack Mountable
- 3 Year Warranty



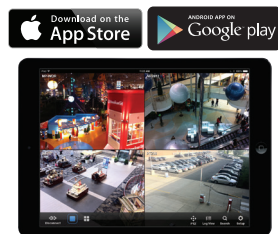
Intuitive configuration menu.



Easy to load HDD with removable faceplate.



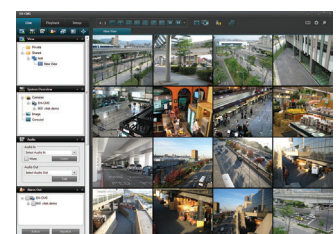
Remote Viewing over the Internet, LAN, Explorer, Safari, Firefox, Opera and Chrome



Remote Viewing Apps Available for iPhone, iPad & Android Devices



View backups on PC computers using included Backup Player Software



Included CMS Software allows remote viewing & control of multiple DVR's even when located at multiple locations!

Detailed Specifications

Video Inputs	16 Channels (TVI / AHD / 960H)
Video Compression	H.264
FPS (Display & Recording)	480 / 480 @ 1080P / 720P / 960H / D1 / 2CIF / CIF
FPS (Playback)	4div: Up to 120FPS @ 1920x1080 / Up to 480FPS @ CIF
Operating System	Linux
Video Output	VGA / HDMI / 2x Spot BNC
Dual Monitor Support	YES
Split-Screen	Live: 1, 4,6,8,9,16 SEQ / Playback: 1, 4,6,8,9,16
Audio In/Out	16 Line In (RCA) / 1 Line Out (RCA)
Alarm In/Out	18 Alarm Inputs (16 +1 Panic & 1 Reset) 8 Outputs with 8 Relays
Internal Storage	5 Internal HDD's (SATA)
On-Board RAID	YES
External Storage	eSATA / NAS (Backup to FTP Server)
Archive	USB Device & Network
USB Port	3 Ports (2 Front + 1 Rear)
System Control	Front Panel, USB Mouse, Included IR Remote Control, or Keyboard controller
Network	TCP/IP, HTTP, DHCP (DDNS)
RJ-45 Ethernet Port	1x - 10/100/1000Mbps
Auto Port Forwarding	YES
Search	Calendar, Time, Panorama (thumbnail), Event
PTZ Control	CoC (Up the COAX) / 2x RS485 & 1x RS232
Recording Resolution Setting	Individual resolution settings for each camera (CIF, 2CIF, D1, 960H, 720p, 1080P)
Recording Quality Control	5 Levels (Lowest/Low/Standard/High/Highest)
Recording Modes	By hour, by day, by recording mode, By alarm, By Channel
Panic Record	Overrides all other recording settings to provide the best quality recording
Pre-recording	Max. 15 seconds
Post-recording	Max. 180 seconds
Motion Detection	Adjustable 20x12 Grid with 10 Steps Sensitivity Level
Player	Backup player and HDD PC Viewer
Remote Viewing	YES (Windows®, Linux, Mac OSX®)
E-mail notification	E-mails to specific users to notify events
System Configuration	Full setup configuration over network
Bandwidth limit	YES: Adjustable by User
Two-Way Audio	YES
Power	12V Adaptor, 6.67A, 100~220VAC, 50~60Hz
Power Consumption	42W max. without HDD
Operating Temperature	32° ~ 104°F (0° ~ 40°C)
Humidity	10 ~ 90% NC
Case Form Factor	2U
Dimensions (W x H x D)	16.93" x 3.48" x 14.45" (430 x 88.4 x 367mm)
Weight	12.0 lbs (5.4kg)