

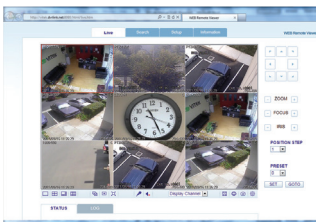


FEATURES

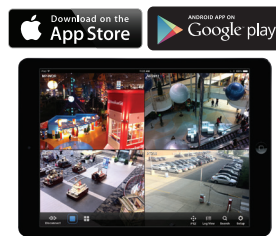
- Supports High Resolution 960H Cameras
- 4, 8, or 16 Video Inputs with 1 HDMI, 1 Spot Monitor Output, and 1 VGA output
- H.264 Compression
- Real Time Live Display & Recording
- Supports both Dynamic and Static IP Addresses
- 4 Audio Inputs / 1 Audio Out
- 4 Alarm Inputs / 2 Relays Out
- Supports up to 4 internal Hard Drives for up to 24TB of internal Storage (4 x 6TB HDD)
- Supports 6TB Hard Drives
- Remote Viewing over the LAN/WAN via Web Browser
- Applications for iPhone, iPad, iTouch and Android Devices
- Thumbnail & "Quick Search" Functions
- Dual Gigabit Ethernet Ports (1 LAN + 1 WAN)
- Mac OSX Client & CMS Central Management Software Included
- Automatic sending of Health & Event notifications via email
- Control locally via Front Panel Controls, USB Mouse or with the Included IR Remote control
- PTZ Control over RS-485



Intuitive configuration menu.



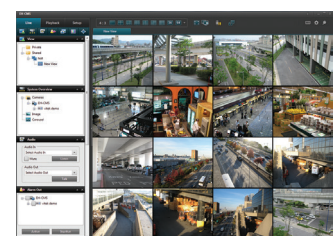
Remote Viewing over the Internet, LAN, Explorer, Safari, Firefox, Opera and Chrome



Remote Viewing Apps Available for iPhone, iPad & Android Devices



View backups on PC computers using included Backup Player Software



Included CMS Software allows remote viewing & control of multiple DVR's even when located at multiple locations!

Detailed Specifications	VT-SRE904	VT-SRE908	VT-SRE916
Video Input	4 Channels	8 Channels	16 Channels
Video Compression	H.264	H.264	H.264
FPS (Display / Recording)	120 / 120 (CIF, 2CIF, D1, 960H)	240 / 240 (CIF, 2CIF, D1, 960H)	480 / 480 (CIF, 2CIF, D1, 960H)
Playback Rate	120FPS @ 960H / 120FPS @ CIF	240FPS @ 960H / 240FPS @ CIF	480FPS @ 960H / 480FPS @ CIF
Operating System	Linux		
Video Output	VGA / HDMI		
Split-Screen	Live: 1, 4, SEQ / Playback: 1, 4	Live: 1,4,6,8,9, SEQ / Playback: 1, 4, 9	Live: 1, 4,6,8,9,16 SEQ / Playback: 1, 4,6,8,9,16
Audio In/Out	4 Line In (RCA) / 1 Line Out (RCA)		
Alarm In/Out	4 Alarm Inputs / 2 Outputs with 1 Relay		
Storage	2 Internal HDD (SATA)	4 Internal HDD (SATA)	4 Internal HDD (SATA)
Archive	USB Device & Network		
USB Port	3 Ports (2 Front + 1 Rear)		
eSATA	N/A	YES	YES
System Control	Front Panel, USB Mouse, Included IR Remote Control		
Network	TCP/IP, HTTP, DHCP (DDNS)		
RJ-45 Ethernet Port	1 - 10/100/1000Mbps	1 (LAN) + 1 (WAN) - 10/100/1000Mbps	1 (LAN) + 1 (WAN) - 10/100/1000Mbps
Search	Calendar, Event		
PTZ	1 - RS-485		
Recording Resolution Setting	By each camera for different resolution setting(CIF/2CIF/D1/960H)		
Recording Quality Control	4 Levels (Low/Standard/High/Highest)		
Recording Modes	By hour, by day, by recording mode, By alarm, By Ch		
Panic Record	Overrides all other recording settings to provide the best quality recording		
Pre-recording	Max. 5 seconds		
Post-recording	Max. 180 seconds		
Motion Detection	Adjustable 20x12 Grid with 10 Steps Sensitivity Level		
Player	Backup player, and HDD PC Viewer		
E-mail notification	E-mails to specific users to notify events		
System Configuration	Full setup configuration over network		
Bandwidth limit	YES: Adjustable by User		
Two-Way Audio	YES		
Power	12V Adaptor, 6.67A, 100~220VAC, 50~60Hz		
Operating Temperature	32° ~ 104°F (0° ~ 40°C)		
Humidity	10 ~ 90% NC		
Case Form Factor	1.5U		
Dimensions (W x H x D)	14.5" x 14.5" x 2.75"		
Weight	8.0 lbs (3.6kg)		



VT-SRE904 Rear Inputs



VT-SRE908 Rear Inputs



VT-SRE916 Rear Inputs