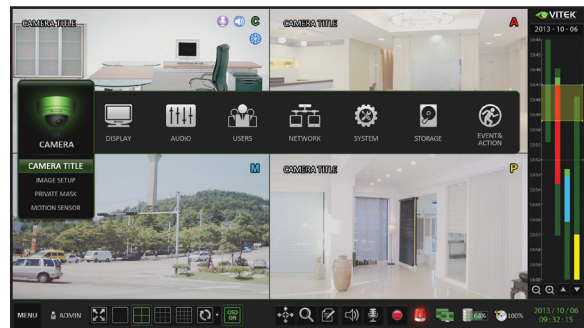




FEATURES

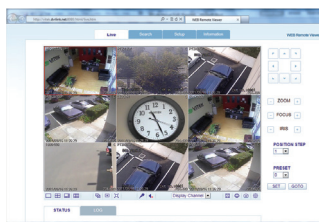
- Supports High Resolution 960H Cameras
- 8 or 16 Video Inputs with 1 HDMI, 1 Spot Monitor Output, and 1 VGA output
- H.264 Compression
- Real Time Live Display & Recording
- Supports both Dynamic and Static IP Addresses
- 8 Audio Inputs / 2 Audio Outputs (VT-SRP908) / 16 Audio Inputs / 2 Audio Outputs (VT-SRP916)
- 10 Alarm Inputs / 4 Outputs with 1 Relay (VT-SRP908) / 18 Alarm Inputs / 8 Outputs with 1 Relay (VT-SRP916)
- Supports 5 internal Hard Drives for up to 30TB of internal Storage (5 x 6TB HDD)
- Supports 6TB Hard Drives
- Supports RAID Levels 1 & 5
- Remote Viewing over the LAN/WAN via Web Browser
- Applications for iPhone, iPad, iTouch and Android Devices
- Thumbnail & "Quick Search" Functions
- Dual Gigabit Ethernet Ports (1 LAN + 1 WAN)
- Mac OSX Client & CMS Central Management Software Included
- Automatic sending of Health & Event notifications via email
- Control locally via Front Panel Controls, USB Mouse or with the Included IR Remote control
- PTZ Control over RS-485



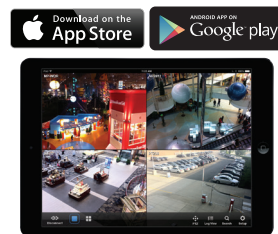
Intuitive configuration menu.



Easy to load HDD with removable faceplate.



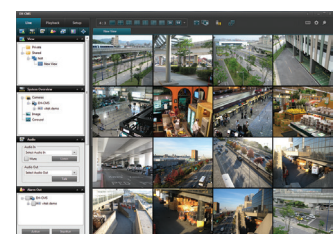
Remote Viewing over the Internet, LAN, Explorer, Safari, Firefox, Opera and Chrome



Remote viewing Apps Available for iPhone, iPad & Android Devices



View backups on PC computers using included Backup Player Software



Included CMS Software allows remote viewing & control of multiple DVR's even when located at multiple locations!

Detailed Specifications	VT-SRP908	VT-SRP916
Video Input	8 Channels	16 Channels
Video Compression	H.264	
FPS (Display / Recording)	240 / 240 (CIF, 2CIF, D1, 960H)	480 / 480 (CIF, 2CIF, D1, 960H)
Playback Rate	240FPS @ 960H / 240FPS @ CIF	480FPS @ 960H / 480FPS @ CIF
Operating System	Linux	
Video Output	VGA / HDMI	
Spit-Screen	Live: 1,4,6,8,9, SEQ / Playback: 1, 4, 9	Live: 1, 4,6,8,9,16 SEQ / Playback: 1, 4,6,8,9,16
Audio In/Out	8 Line In / 2 Line Out, CODEC : G.711 (64Kbps)	16 Line In / 2 Line Out, CODEC : G.711 (64Kbps)
Alarm In/Out	10 Alarm Inputs / 4 Outputs with 1 Relay	18 Alarm Inputs / 8 Outputs with 1 Relay
Storage	5 Internal HDD's (SATA)	
Archive	USB Device & Network	
USB Port	3 Ports (2 Front + 1 Rear)	
eSATA	YES	
System Control	Front Panel, USB Mouse, Included IR Remote Control, or Keyboard controller	
Network	TCP/IP, HTTP, DHCP (DDNS)	
RJ-45 Ethernet Port	1 (LAN) + 1 (WAN) - 10/100/1000Mbps	
Search	Calendar, Event	
PTZ	1 - RS-485 - Supports most of PTZ protocols with up to 255 Presets	
Recording Resolution Setting	Individual resolution settings for each camera (CIF/2CIF/D1)	
Recording Quality Control	4 Levels (Low/Standard/High/Highest)	
Recording Modes	By hour, by day, by recording mode, By alarm, By Channel	
Panic Record	Overrides all other recording settings to provide the best quality recording	
Pre-recording	Max. 5 seconds	
Post-recording	Max. 180 seconds	
Motion Detection	Adjustable 20x12 Grid with 10 Steps Sensitivity Level	
Player	Backup player and HDD PC Viewer	
E-mail notification	E-mails to specific users to notify events	
System Configuration	Full setup configuration over network	
Bandwidth limit	YES: Adjustable by User	
Two-Way Audio	YES	
Power	12V Adaptor, 6.67A, 100~220VAC, 50~60Hz	
Operating Temperature	32° ~ 104°F (0° ~ 40°C)	
Humidity	10 ~ 90% NC	
Case Form Factor	2.0U	
Dimensions (W x H x D)	16.93" x 14.45" x 3.48" (430 x 367 x 88.4mm)	



VT-SRP916 Rear Inputs