



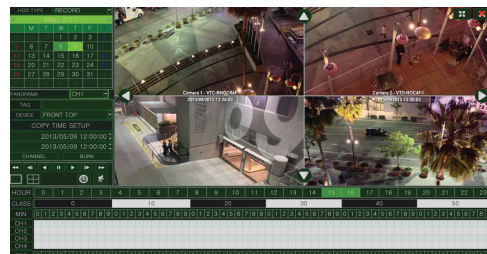
### FEATURES

- 1/2.9" Sony Progressive Scan CMOS
- 2.1 MegaPixel with Full 1080p/720p HD-SDI Output (SMPTE292M)
- 35 IR LEDs with 120' Range
- Built in 2.8-12mm Megapixel lens
- Heavy Duty Vandal & IP67 Weather Resistance rating
- 16:9 Video Format
- Advanced OSD Functions: WDR, 3D-DNR, Motion Detection, Privacy/Highlight Masking, Digital Zoom, Flip, Mirror
- 100% Pure Digital Transmission of video data
- Up to 700' HD Transmission Range (depending on cable characteristics and integrity)
- 12VDC/24VAC Dual Voltage Operation

With the all new On Cue Lineup, 2MP 1080P images can be recorded using existing coax cable with distances up to 700' depending on cable characteristics and integrity. 4 new camera options cover most any application, and High Definition Stand-Alone Digital Recorders with remote software and mobile apps offer performance and versatility never before available in the security marketplace.



Remote Viewing Apps for iPhone, iPad & Android



Local Management & Viewing Interface when paired with VT-HDOC 4 Channel HD-SDI DVR

Detailed Specifications	
Sensor	1/2.9" Sony® CMOS
Resolution	2.1 MegaPixel (1080p / 720p)
S/N	More than 52 dB (AGC Off)
Video Output	1x HD-SDI (BNC) / 1x SD CVBS (BNC)
IR Illuminators	35 IR LEDs
IR Color Temp.	850nm
IR Range	120'
Dynamic Intensity IR LEDs	YES
Lens	MegaPixel IR Corrected 2.8-12mm Varifocal
Minimum Illumination	1 Lux at F1.2 / 0.1 Lux (B/W) / 0 Lux with IR On
Day/Night	Mechanical IR Cut Filter (True Day/Night)
Electronic shutter speed	Auto / Manual (1/30sec ~ 1/30,000sec)
White Balance	ATW / ATWext / One Push / Manual
Brightness	Adjustable (0 ~ 20 Steps)
DSS (Sens-Up)	OFF / X2 ~ X8
DNR	3D-DNR
WDR	YES
Privacy	YES (16 Zones)
Motion Detection	YES
ACE (Adaptive Color Enhancement)	YES
Advanced OSD Functions	HLM, Flip, Freeze, Sharpness, Mirror
Communication	RS-485 (Pelco® D)
HD Transmission Range	Up to 700' (Depending on cable characteristics and integrity)
Weather Resistance Rating	IP-67
Operating Conditions	14°-122°F (-10°-50°C) < 80% RH
Input Voltage	12VDC / 24VAC (Dual Voltage)
Power Consumption (12VDC)	170mA / 500mA (IR OFF/ON)
Power Consumption (24VAC)	260mA /700mA (IR OFF/ON)
Dimensions	5.20" x 4.72" (H x Dia.)

Sony® is the registered trademark of an independently owned and operated company. This product has not been licensed or endorsed by the manufacturer of Sony® products.

