

ENVI
ENHANCED NETWORK
VIDEO INTEGRATION



MicroSD Card Slot
for Onboard **EDGE**
Recording & Playback

IPcctv
MegaPixel CCTV Over IP Networks



FEATURES:

- 1/2.9" Sony® Exmor™ Progressive Scan CMOS Sensor
- Up to 30fps live view @ 1920x1080p
- Built-in Mega Pixel Fixed 3.6mm Lens
- 30 850nm Infrared LEDs with 120' IR Range
- Auto True Day Night (TDN) with Dual Filter Switch for no focus shift at night
- WDR (Wide Dynamic Range)
- 3D-DNR Noise Reduction
- 16:9 Video format
- H.264/MJPEG Dual Streaming
- Minimal Latency w/Max 16 User Connections
- Onvif Profile S Compatibility
- MicroSD Card Slot supporting up to 64GB cards for Onboard **EDGE** Recording and Playback
- Motion Detection, Privacy Masking & Highlight Masking
- Gasket Sealed with an IP66 Weather Resistance Rating
- 12VDC & PoE (Power over Ethernet) Operation

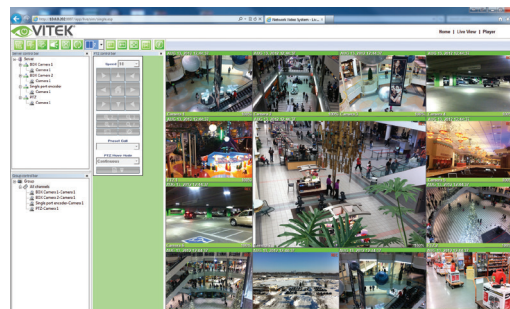
The all New VITEK ENVI Series IP cameras and Network devices hold true to our continued commitment to Innovation and Technology while offering the Value and simplicity that has become synonymous with our brand.

ENVI Series IP Products are all ONVIF compliant in addition to their direct integration with some of the industry's leading brands including Video Insight, AXXON, LuxRiot, ONSSI, Milestone, Genetec, ExacqVision and many more!

The VITEK ENVI Series Outdoor 1.3 & 2.0 Megapixel IP Cameras offer Weather/Vandal Resistance and deliver real time live video up to 30fps @ 1920x1080p over a TCP/IP Network. Crystal clear images are achieved without tearing by use of a progressive scan CMOS image sensor. Minimal network bandwidth and storage space is needed due to the most advanced H.264 Video Compression algorithm. Motion JPEG is also supported for maximum flexibility and integration possibilities. All ENVI cameras also offer **EDGE Recording** with onboard SD or MicroSD card slots for on camera backup with remote access & playback.



ENVI Mobile App
ENVI Remote Viewing App for iPad/iPhone & Android Devices



Web based interface.

Specifications	
Image Device	1/2.9" Sony® Exmor™ Progressive Scan CMOS
Resolution (2.0MP)	2.0 MegaPixel (1920x1080p)
Video Format	16:9
Video Encoding	H.264 / MJPEG dual streaming
Frame Rate	30fps max
Lens Options	MegaPixel 3.6mm (Fixed)
IR LEDs (Built-In)	30 850nm IR LED's with up to 120' Range
Day/Night	True Day/Night by ICR
Noise Reduction	3D-DNR
Water Resistance	IP-66
Memory Card	MicroSD - up to 64GB
Connectivity	Up to 16 simultaneous user connections
PoE	YES
Power Source	12VDC
Power Consumption (12VDC)	500mA (IR OFF) / 840mA (IR ON)
Power Consumption (PoE)	6W (IR OFF) / 10W (IR ON)
Operating Conditions	-20° - 50°C (-4° - 122°F) < 80% RH
Dimensions	2.64"(Ø) x 3.00" x 9.25"
Weight	1.1lb (500g)



INTEGRATION WITH THE INDUSTRY'S MOST TRUSTED BRANDS!



OnSSI

