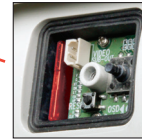


ENVI ENHANCED NETWORK VIDEO INTEGRATION



SD Card Slot for Onboard EDGE Recording & Playback

IPcctv
MegaPixel CCTV Over IP Networks



FEATURES:

- 1/2.9" Sony® Exmor™ Progressive Scan CMOS Sensor
- Up to 30fps live view @ 1920x1080p
- 9-22mm MegaPixel 2.4x (Optical) Auto Zoom/Focus with 32x Digital Zoom
- Automatic Zoom IN/OUT when motion is detected
- 30 850nm Infrared LEDs with 300' IR Range
- Auto True Day Night (TDN) with Dual Filter Switch for no focus shift at night
- WDR (Wide Dynamic Range)
- 3D-DNR Noise Reduction
- 16:9 Video format
- H.264/MJPEG Dual Streaming
- Full duplex 2 way audio
- Minimal Latency w/Max 16 User Connections
- Onvif Profile S Compatibility
- Standard SD Card Slot supporting up to 64GB cards for Onboard EDGE Recording and Playback
- Secondary video output for ease of installation & maintenance
- Motion Detection, Privacy Masking & Highlight Masking
- Gasket Sealed with an IP68 Weather Resistance Rating
- 12VDC/24VAC & PoE (Power over Ethernet) Operation

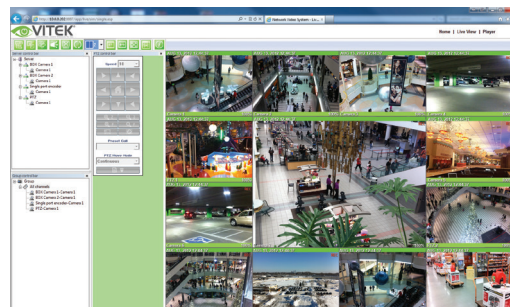
The all New VITEK ENVI Series IP cameras and Network devices hold true to our continued commitment to Innovation and Technology while offering the Value and simplicity that has become synonymous with our brand.

ENVI Series IP Products are all ONVIF compliant in addition to their direct integration with some of the industry's leading brands including Video Insight, AXXON, LuxRiot, ONSSI, Milestone, Genetec, ExacqVision and many more!

The VITEK ENVI Series Outdoor 2.1 Megapixel IP Cameras offer Weather/Vandal Resistance and deliver real time live video up to 30fps @ 1920x1080p over a TCP/IP Network. Crystal clear images are achieved without tearing by use of a progressive scan CMOS image sensor. Minimal network bandwidth and storage space is needed due to the most advanced H.264 Video Compression algorithm. Motion JPEG is also supported for maximum flexibility and integration possibilities. All ENVI cameras also offer **EDGE Recording** with onboard SD or MicroSD card slots for on camera backup with remote access & playback.



ENVI Mobile App
ENVI Remote Viewing App for iPad/iPhone & Android Devices



Web based interface.

VTC-IR62HA/922NP

ENVI 2.1MP Network IP68 Vandal Resistant IR Bullet Camera w/300' Range

Specifications

Image Device	1/2.9" Sony® Exmor™ Progressive Scan CMOS
Resolution (2.1MP)	2.1 MegaPixel (1920x1080p)
Video Format	16:9
Video Encoding	H.264 / MJPEG dual streaming
Frame Rate	30fps max
Lens Options	9-22mm MegaPixel 2.4x Auto Zoom/Focus
IR LEDs (Built-In)	6 High Power 850nm IR LED's with up to 300' Range
Day/Night	True Day/Night by ICR
Noise Reduction	3D-DNR
Water Resistance	IP-68
Memory Card	Standard SD - up to 64GB
Connectivity	Up to 16 simultaneous user connections
Audio	2-Way full duplex
PoE	YES
Power Source	12VDC/24VAC
Operating Conditions	-20° - 50°C (-4° - 122°F) < 80% RH
Dimensions	3.94" x 11.03" x 9"
Weight	5.51lb (2.5kg)



INTEGRATION WITH THE INDUSTRY'S MOST TRUSTED BRANDS!



OnSSI



(888) VITEK-70 | WWW.VITEKCCTV.COM
28492 Constellation Road Valencia, CA 91355

An Eye On Innovation