

ENVI
ENHANCED NETWORK
VIDEO INTEGRATION



IPcctv
MegaPixel CCTV Over IP Networks



FEATURES:

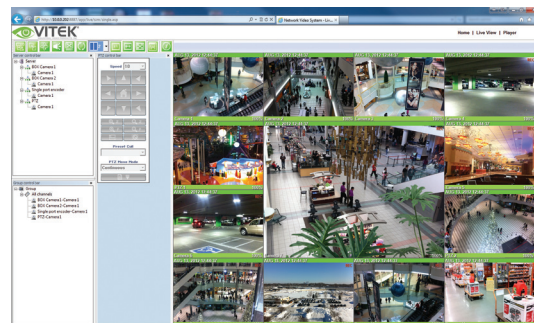
- 1/3" 1.3 Megapixel Progressive Scan CMOS imager
- Up to 30fps live view @ 1280x1024
- 3.8mm Fixed (VTD-13FN) / 2.8-10mm Varifocal Auto Iris (VTD-13V) Lens Included
- 2D-DNR Noise Reduction
- 4:3 Video format
- True Day Night (TDN) without focus shift is achieved with dual filter switch function (VTD-13V)
- Secondary video output for installation & maintenance
- H.264/MJPEG Dual Streaming
- Minimal Latency with up to 16 simultaneous user connections
- Onvif Compliance
- SD memory card slot for Local recording
- Optional Wall Ceiling Mount Available
- 12VDC Operation / Optional PoE (Power over Ethernet)
- Available in Ivory or Black

VITEK ENVI Series IP cameras and Network devices hold true to our continued commitment to Innovation and Technology while offering the Value and simplicity that has become synonymous with our brand.

ENVI Series IP Products are all ONVIF standard in addition to their direct integration with many of the industry's leading brands.

Features such as Dual Streaming H.264/MJPEG Transmission, Power over Ethernet (PoE) Options and a variety of cost effective, practical designs afford the Security Professional with a clear path to success in our fast paced technology driven world.

The VITEK ENVI Series Indoor 1.3 Megapixel IP Dome Cameras deliver real time live video up to 30fps @ 1280x1024p over a TCP/IP Network. Crystal clear images are achieved without tearing by use of a progressive scan CMOS image sensor. Minimal network bandwidth and storage space is needed due to the most advanced H.264 Video Compression algorithm. Motion JPEG is also supported for maximum flexibility and integration possibilities.



Specifications	VTD-13FN	VTD-13VN
Image Device	1/3" Progressive Scan CMOS	1/3" Progressive Scan CMOS
Resolution (1.3MP)	1.3 MegaPixel (1280x1024)	1.3 MegaPixel (1280x1024)
Video Format	4:3	4:3
Video Encoding	H.264 / MJPEG dual streaming	H.264 / MJPEG dual streaming
Frame Rate	30fps max	30fps max
Lens Options	3.8mm (Fixed)	2.8-10mm (Varifocal)
Day/Night	Auto	Auto
Noise Reduction	2D-DNR	2D-DNR
Memory Card	MicroSD - up to 32GB	MicroSD - up to 32GB
Connectivity	Up to 16 simultaneous user connections	Up to 16 simultaneous user connections
PoE	Optional	Optional
Power Source	12VDC	12VDC
Power Consumption (12VDC)	250mA	450mA
Power Consumption (PoE)	6W	10W
Operating Conditions	-10°-50°C (14°-122°F) < 80% RH	-10°-50°C (14°-122°F) < 80% RH
Dimensions	3.07" x 4.6" (78mm x 117mm)	3.7" x 5.44" (94mm x 138mm)
Weight	10.5oz (267g) / 12oz (305g) w/PoE	11.3oz (287g) / 12.9oz (328g) w/PoE



AVAILABLE CONFIGURATIONS

VTD-134FN/W	1.3 MegaPixel Indoor Dome w/3.8mm Fixed Lens (White)
VTD-134FNP/W	1.3 MegaPixel Indoor Dome w/3.8mm Fixed Lens & PoE (White)
VTD-134FN/B	1.3 MegaPixel Indoor Dome w/3.8mm Fixed Lens (Black)
VTD-134FNP/B	1.3 MegaPixel Indoor Dome w/3.8mm Fixed Lens & PoE (Black)
VTD-13V210N/W	1.3 MegaPixel Indoor Dome w/2.8-10mm Lens (White)
VTD-13V210NP/W	1.3 MegaPixel Indoor Dome w/2.8-10mm Lens & PoE (White)
VTD-13V210N/B	1.3 MegaPixel Indoor Dome w/2.8-10mm Lens (Black)
VTD-13V210NP/B	1.3 MegaPixel Indoor Dome w/2.8-10mm Lens & PoE (Black)



BREAKDOWN OF MODEL NUMBERS:

EXAMPLE: VTD-134FN/W

(VTD)	{13}	{4}	{F}	{N}	{W}
VITEK Dome	1.3MP	3.8mm Lens	Fixed Lens	Network (IP)	White