



ENVI
ENHANCED NETWORK
VIDEO INTEGRATION



MicroSD Card Slot for Onboard **EDGE** Recording & Playback

IPcctv
MegaPixel CCTV Over IP Networks



FEATURES:

- 1/3" 2.0 Megapixel Progressive Scan CMOS image sensors
- Up to 30fps live view @ 1920x1080p
- 2.8-10mm MegaPixel Varifocal Auto Iris Lens
- 2D-DNR Noise Reduction
- 16:9 Video format
- Secondary video output for installation & maintenance
- H.264/MJPEG Dual Streaming
- Minimal Latency with up to 16 simultaneous user connections
- Onvif Compliance
- EDGE recording with onboard MicroSD memory card slot (supports up to 64GB of local storage)
- Optional Wall Mount available
- 12VDC Operation / Optional PoE (Power over Ethernet)
- Available in Ivory or Black
- 3 Year Warranty

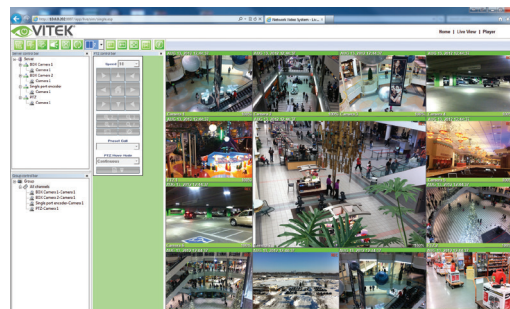
The all New VITEK ENVI Series IP cameras and Network devices hold true to our continued commitment to Innovation and Technology while offering the Value and simplicity that has become synonymous with our brand.

ENVI Series IP Products are all ONVIF compliant in addition to their direct integration with some of the industry's leading brands including Video Insight, AXSON, LuxRiot, ONSSI, Milestone, Genetec, and many more!

The indoor VITEK ENVI Series 2.0 MegaPixel IP Cameras deliver real time live video up to 30fps @ 1920x1080p over a TCP/IP Network. Crystal clear images are achieved without tearing by use of a progressive scan CMOS image sensor. Minimal network bandwidth and storage space is needed due to the most advanced H.264 Video Compression Algorithm. Motion JPEG is also supported for maximum flexibility and integration possibilities. All ENVI cameras offer **EDGE recording** with onboard SD or MicroSD card slots for on camera backup with remote access & playback.



ENVI Mobile App
ENVI Remote Viewing App for iPad/iPhone & Android Devices



Web based interface.



Specifications

Image Device	1/3" Progressive Scan CMOS
Resolution	2.0 MegaPixel (1920x1080p)
Video Format	16:9
Video Encoding	H.264 / MJPEG dual streaming
Frame Rate	30fps max
Lens Options	MegaPixel 2.8-10mm (Varifocal)
Day/Night	Auto
Noise Reduction	2D-DNR
Memory Card	MicroSD - up to 64GB
Connectivity	Up to 16 simultaneous user connections
PoE	Optional
Power Source	12VDC
Power Consumption (12VDC)	300mA
Power Consumption (PoE)	7W
Operating Conditions	-10°-50°C (14°-122°F) < 80% RH
Dimensions	3.7" x 5.44" (94mm x 138mm)
Weight	11.3oz (287g) / 12.9oz (328g) w/PoE



VT-AP/WMT/W
Optional Indoor Wall Mount (Ivory)



VT-AP/WMT/B
Optional Indoor Wall Mount (Black)

AVAILABLE CONFIGURATIONS

VTD-20V210NIW	2.0 MegaPixel Indoor Dome w/2.8-10mm Lens
VTD-20V210NIB	2.0 MegaPixel Indoor Dome w/2.8-10mm Lens (In Black)
VTD-20V210NIWP	2.0 MegaPixel Indoor Dome w/2.8-10mm Lens & PoE
VTD-20V210NIBP	2.0 MegaPixel Indoor Dome w/2.8-10mm Lens & PoE (In Black)

BREAKDOWN OF MODEL NUMBERS:

EXAMPLE: VTD-20V210NIP

{VTD}	{20}	{V}	{210}	{NI}	{W}	{P}
VITEK Dome	2.0MP	Varifocal	2.8-10mm	Network (IP)	White	PoE (Power over Ethernet)