

ENVI
ENHANCED NETWORK
VIDEO INTEGRATION



IPcctv
MegaPixel CCTV Over IP Networks



FEATURES:

- 1/3" 1.3 & 2.0 Megapixel Progressive Scan CMOS image sensor
- Up to 30fps live view @ 1920x1080p (2.0 MegaPixel Models) / 1280x1024 (1.3 MegaPixel Models)
- 2.8-10mm Varifocal Auto Iris Lens
- 35 Infrared LED's with 120' IR Range (VTD-MV-VRN)
- True Mechanical Day/Night function
- 2D-DNR Noise Reduction
- Auto True Day Night (TDN) without focus shift is achieved with dual filter switch
- Secondary video output for installation & maintenance
- H.264/MJPEG Dual Streaming
- Minimal Latency with up to 16 simultaneous user connections
- Onvif Compliance
- Micro SD memory card slot for Local recording
- Infinity Ball Mount to help achieve any Viewing Angle
- Fully Gasket Sealed with an IP68 Water tight NEMA Rating
- Extensive mounting options available
- 12VDC/24VAC & PoE (Power over Ethernet) Operation
- Available in Ivory or Black

VITEK ENVI Series IP cameras and Network devices hold true to our continued commitment to Innovation and Technology while offering the Value and simplicity that has become synonymous with our brand.

ENVI Series IP Products are all ONVIF standard in addition to their direct integration with some of the industry's leading brands.

Features such as Dual Streaming H.264/MJPEG Transmission, Power over Ethernet (PoE) and a variety of cost effective, practical designs afford the Security Professional with a clear path to success in our fast paced technology driven world.

The VITEK ENVI Series Outdoor 1.3 & 2.0 Megapixel IP Dome Cameras offer an IP-68 Weather/Vandal Resistance Rating and deliver real time live video up to 30fps @ 1920x1080p over a TCP/IP Network. Crystal clear images are achieved without tearing by use of a progressive scan CMOS image sensor. Minimal network bandwidth and storage space is needed due to the most advanced H.264 Video Compression algorithm. Motion JPEG is also supported for maximum flexibility and integration possibilities.



Fully Gasket Sealed IP68 Rated Weatherproof Design.



Can be Surface Mounted with Included Surface Mount Casing or Semi-Flush Mounted for Sleek, Low Profile Installation.



Secondary Video Output Enables Ease of Adjustment after Installation.



Friction Fit Ball Mount Camera Module Can Achieve Virtually Any Viewing Angle.



The Mighty Dome Vandal base has been designed to manage and protect video and power cables without the need for external adaptors.

VTD-MV-VN / VTD-MV-VRN

ENVI MegaPixel Vandal Resistant
Mighty Dome Cameras

Specifications	VTD-MV-VN	VTD-MV-VRN
Image Device	1/3" Progressive Scan CMOS	1/3" Progressive Scan CMOS
Resolution (1.3MP)	1.3 MegaPixel (1280x1024)	1.3 MegaPixel (1280x1024)
Resolution (2.0MP)	2.0 MegaPixel (1920x1080p)	2.0 MegaPixel (1920x1080p)
Video Format	4:3 (1.3MP) / 16:9 (2.0MP)	4:3 (1.3MP) / 16:9 (2.0MP)
Video Encoding	H.264 / MJPEG dual streaming	H.264 / MJPEG dual streaming
Frame Rate	30fps max	30fps max
Lens Options	2.8-10mm (Varifocal)	2.8-10mm (Varifocal)
IR LEDs (Built-In)	N/A	35 IR LED's with up to 120' Range
Day/Night	True Day/Night by ICR	True Day/Night by ICR
Noise Reduction	2D-DNR	2D-DNR
Water Resistance	IP-68	IP-68
Memory Card	MicroSD - up to 32GB	MicroSD - up to 32GB
Connectivity	Up to 16 simultaneous user connections	Up to 16 simultaneous user connections
PoE	YES	YES
Power Source	12VDC/24VAC	12VDC/24VAC
Power Consumption (12VDC)	300mA	300mA (IR OFF) / 500mA (IR ON)
Power Consumption (24VAC)	250mA	250mA (IR OFF) / 350mA (IR ON)
Power Consumption (PoE)	6W	10W
Operating Conditions	-10°-50°C (14°-122°F) < 80% RH	-10°-50°C (14°-122°F) < 80% RH
Dimensions	4.45" x 6.73" (110mm x 170mm)	4.45" x 6.73" (110mm x 170mm)
Weight	2.3lb (1043g)	2.3lb (1043g)



OPTIONAL MOUNTS TO SUIT ANY APPLICATION



VT-MD/WMT
Mighty Dome / VT-PTZ10
Wall Mount



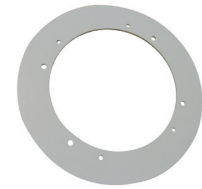
VT-MD/CMT
Mighty Dome Pedestal
Ceiling Mount



VT-MD/CNMT
Mighty Dome / VT-PTZ10
Corner Mount Adapter



VT-MD/PLMT
Mighty Dome / VT-PTZ10
Pole Mount Adapter



VTD-MD-FMP
Mighty Dome Flush Mount
Decorator Plate

AVAILABLE CONFIGURATIONS

VTD-MV13V210NP/W	1.3 MegaPixel Mighty Dome w/2.8-10mm Lens & PoE (White)
VTD-MV13V210NP/B	1.3 MegaPixel Mighty Dome w/2.8-10mm Lens & PoE (Black)
VTD-MV20V210NP/W	2.0 MegaPixel Mighty Dome w/2.8-10mm Lens & PoE (White)
VTD-MV20V210NP/B	2.0 MegaPixel Mighty Dome w/2.8-10mm Lens & PoE (Black)
VTD-MV13VR210NP/W	1.3 MegaPixel IR Mighty Dome w/2.8-10mm Lens & PoE (White)
VTD-MV13VR210NP/B	1.3 MegaPixel IR Mighty Dome w/2.8-10mm Lens & PoE (Black)
VTD-MV20VR210NP/W	2.0 MegaPixel IR Mighty Dome w/2.8-10mm Lens & PoE (White)
VTD-MV20VR210NP/B	2.0 MegaPixel IR Mighty Dome w/2.8-10mm Lens & PoE (Black)

IPcctv
MegaPixel CCTV Over IP Networks

ENVI
ENHANCED NETWORK
VIDEO INTEGRATION

BREAKDOWN OF MODEL NUMBERS:

EXAMPLE: VTD-MV13V210NP/W

{VTD}	{MV}	{13}	{V/VR}	{N}	{P}	{W}
VITEK Dome	Mighty Vandal	1.3MP	2.8-10mm Varifocal (VR = w/IR LEDs)	Network (IP)	PoE (Power over Ethernet)	White



(888) VITEK-70 | WWW.VITEKCCTV.COM
28492 Constellation Road Valencia, CA 91355